





KLAS KABLO JE-H(SI)H FE180 PH120

# Sorumluluğumuzun FARKINDAYIZ!



Yangın anında işlevini devam ettiren, zehirli ve korozyif gaz çıkarmayan, duman yoğunluğu azaltılmış, alev geciktiricili kablolar; EN 50200 standardına uygun olarak VDE ve TSE tarafından sertifikalıdır.



 **KLAS KABLO**<sup>®</sup>  
www.klasenerji.com.tr

# İÇİNDEKİLER

| ÜRÜN   |   | SAYFA NO |
|--|---|----------|
| 75 Ohm FİZİKSEL KÖPÜRTMELİ KOAKSİYEL KABLOLAR PVC                  | RG 59, RG 6, RG 11                            | 2        |
| 75 Ohm FİZİKSEL KÖPÜRTMELİ KOAKSİYEL KABLOLAR HFFR                 | RG 59, RG 6, RG 11                            | 2        |
| 50 Ohm FİZİKSEL KÖPÜRTMELİ KOAKSİYEL KABLOLAR PVC                  | RG 58, RG 174, RG 213, RG 214, IF-5D-FB       | 2        |
| 50 Ohm FİZİKSEL KÖPÜRTMELİ KOAKSİYEL KABLOLAR HFFR                 | RG 58, RG 174, RG 213, RG 214, IF-5D-FB       | 2        |
| 75 Ohm FİZİKSEL KÖPÜRTMELİ KOAKSİYEL KABLOLAR PE                   | RG 6, RG 11                                   | 2        |
| 75 Ohm TRAFÖ VE DAĞITIM MERKEZLERİ VERİ KABLOSU PE                 | RG 12   | 2        |
| 75 Ohm CCTV KAMERA KABLOLARI PVC                                   | CCTV 2+1, CCTV 4+1, CCTV 12+1                 | 3        |
| 75 Ohm CCTV KAMERA KABLOLARI HFFR                                  | CCTV 2+1, CCTV 4+1, CCTV 12+1                 | 3        |
| DIYAFON KABLOLARI PVC  | DT-4, DT-6, DT-8                              | 3        |
| DIYAFON KABLOLARI HFFR   | DT-4, DT-6, DT-8                              | 3        |
| VERİ İLETİŞİM KABLOLARI PVC  | CAT 5e, CAT 6, PROFİBUS, RS-422, RS-485       | 3        |
| VERİ İLETİŞİM KABLOLARI HFFR                                       | CAT 5e, CAT 6, PROFİBUS, RS-422, RS-485       | 3        |
| LOAD-CELL KABLOLARI PVC  | LOADCELL                                      | 3        |
| HARİCİ TİP VERİ İLETİŞİM KABLOLARI PE                              | CAT 6, CAT 6 ÇELİK ZİRHLI                     | 3        |
| YANGIN ALARM KABLOLARI PVC   | J-Y(S)Y...Lg                                  | 4        |
| YANGIN ALARM KABLOLARI HFFR  | JE-H(S)H...Bd                                 | 4        |
| EIB - KNX BUS KABLOLARI PVC  | YCYM  | 4        |
| EIB - KNX BUS KABLOLARI HFFR                                       | HCHM  | 4        |
| YANGINA DAYANIKLI ALARM KABLOLARI HFFR - FE 180 PH 120             | JE-H(S)H...Bd FE 180 PH 120                   | 4        |
| YANGINA DAYANIKLI SİNYAL VE KONTROL KABLOLARI HFFR - FE 180 PH 120 | LIHCH FE 180 PH 120, LIHH FE 180 PH 120       | 5        |
| YANGINA DAYANIKLI SİNYAL VE KONTROL KABLOLARI HFFR - FE 180 PH 120 | LIH(S)H FE 180 PH 120, LIH(S)CH FE 180 PH 120 | 6        |
| SİLİKON İZOLELİ KABLOLAR   | SİAF  | 7        |
| SİLİKON İZOLELİ KABLOLAR FE 180 PH 120                             | SİM H FE 180 PH 120                           | 7        |
| SOLAR KABLOLAR   | PV1-F   | 7        |
| DAHİLİ TİP TELEFON KABLOLARI PVC                                   | PDV   | 8        |
| DAHİLİ TİP TELEFON KABLOLARI HFFR                                  | HBH   | 8        |
| HARİCİ TİP TELEFON KABLOLARI DOLGUSUZ PE                           | KPD-PAP                                       | 8        |
| HARİCİ TİP TELEFON KABLOLARI DOLGULU PE                            | KPDF-AP                                       | 8        |
| KORDON KABLOLAR PVC  | H03VH-H, H05VH-H                              | 9        |
| BALIK SIRTİ KABLOLAR PVC   | H03VVH2-F, H05VVH2-F                          | 9        |
| HARİCİ TİP TELEFON TESİSATI BAĞLANTI KABLOLARI                     | BPDT, BAPDT                                   | 9        |
| MONTAJ KABLOLARI PVC   | LIY, NYA, ZİL TELİ, CAMPER TELİ               | 9        |
| KÖKEN KABLOLAR PVC   | FLAT 2Lİ , 4LÜ, 6Lİ, 8Lİ                      | 9        |
| SİNYAL VE KUMANDA KABLOLARI PVC                                    | LIYY  | 10-11    |
| SİNYAL VE KUMANDA KABLOLARI HFFR                                   | LIHH  | 10-11    |
| SİNYAL VE KUMANDA KABLOLARI PVC                                    | LIY(S)Y                                       | 12-13    |
| SİNYAL VE KUMANDA KABLOLARI HFFR                                   | LIH(S)H                                       | 12-13    |
| SİNYAL VE KUMANDA KABLOLARI PVC                                    | LIYCY   | 14-15    |
| SİNYAL VE KUMANDA KABLOLARI HFFR                                   | LIHCH   | 14-15    |
| SİNYAL VE KUMANDA KABLOLARI PVC                                    | LIY(S)CY                                      | 16-17    |
| SİNYAL VE KUMANDA KABLOLARI HFFR                                   | LIH(S)CH                                      | 16-17    |
| KONTROL VE KUMANDA KABLOLARI PVC                                   | YSLY, YSLYCY                                  | 18       |
| YAĞA DAYANIKLI KONTROL VE KUMANDA KABLOLARI PVC                    | (N)YSLYÖ                                      | 19       |
| YAĞA DAYANIKLI EKLANLI KONTROL VE KUMANDA KABLOLARI PVC            | (N)YSLYCYÖ                                    | 19       |
| YASSI DALGIÇ POMPA ASANSÖR - VİNÇ KABLOLARI PVC                    | H05VVH6-F, H07VVH6-F                          | 20       |
| PENDANT KABLOLAR PVC   | PENDANT                                       | 20       |
| SES VE GÖRÜNTÜ KABLOLARI   | RGB   | 21       |
| MİKROFON VE WALKMAN KABLOLARI                                      | MIC   | 21       |
| MULTİCORE SES KABLOLARI  | AMC   | 21       |
| HOPARLÖR KABLOLARI   | K-SPK   | 21       |
| AG ENERJİ VE TESİSAT KABLOLARI HFFR                                | H05Z1-K, H07Z1-K                              | 22       |
| AG ENERJİ VE TESİSAT KABLOLARI HFFR                                | 052XZ1-F                                      | 22       |
| AG ENERJİ VE TESİSAT KABLOLARI HFFR                                | NHXMH   | 23       |
| AG ENERJİ VE TESİSAT KABLOLARI HFFR - FE 180                       | NHXMH FE 180                                  | 23       |
| TEKNİK BİLGİLER  | AWG DÖNÜŞÜM TABLOSU, RENK KODLARI             | 24       |

Fiyatlarımıza KDV dahil değildir.

Fiyatlarımızda herhangi bir duyuruya gerek kalmaksızın değişiklik yapma hakkımız saklıdır.

### 75 Ohm FİZİKSEL KÖPÜRTMELİ KOAKSİYEL KABLolar PVC

| ÜRÜN KODU    | ÜRÜN CİNSİ  | ÖZELLİK     | BİRİM FİYAT (₺/m) |
|--------------|-------------|-------------|-------------------|
| 1755904400BZ | RG 59/U-4 F | (Cu / SnCu) | 13,02             |
| 1755906700BZ | RG 59/U-6 F | (Cu / Cu)   | 15,45             |
| 1750604400SP | RG 6/U-4 F  | (Cu / SnCu) | 16,07             |
| 1750606700SY | RG 6/U-6 F  | (Cu / Cu)   | 18,84             |
| 1751104400SP | RG 11/U-4 F | (Cu / SnCu) | 34,55             |
| 1751106700SY | RG 11/U-6 F | (Cu / Cu)   | 39,29             |

|              |                      |             |       |
|--------------|----------------------|-------------|-------|
| 1750604450BZ | RG 6/U-4 F TRI SHLD  | (Cu / SnCu) | 16,33 |
| 1750606750BZ | RG 6/U-6 F TRI SHLD  | (Cu / Cu)   | 24,89 |
| 1751104450BZ | RG 11/U-4 F TRI SHLD | (Cu / SnCu) | 35,23 |
| 1751106750BZ | RG 11/U-6 F TRI SHLD | (Cu / Cu)   | 47,47 |

|              |                 |         |       |
|--------------|-----------------|---------|-------|
| 1755904100BZ | RG 59/U-4 F SAT | (Cu-Al) | 9,39  |
| 1750604100BZ | RG 6/U-4 F SAT  | (Cu-Al) | 13,21 |
| 1751104100BZ | RG 11/U-4 F SAT | (Cu-Al) | 28,97 |

### 75 Ohm FİZİKSEL KÖPÜRTMELİ KOAKSİYEL KABLolar HFFR

| ÜRÜN KODU    | ÜRÜN CİNSİ       | ÖZELLİK     | BİRİM FİYAT (₺/m) |
|--------------|------------------|-------------|-------------------|
| 1755904402BZ | RG 59/U-4 F HFFR | (Cu / SnCu) | 13,53             |
| 1755906702BZ | RG 59/U-6 F HFFR | (Cu / Cu)   | 16,18             |
| 1750604402GP | RG 6/U-4 F HFFR  | (Cu / SnCu) | 16,72             |
| 1750606702GY | RG 6/U-6 F HFFR  | (Cu / Cu)   | 19,56             |
| 1751104402GP | RG 11/U-4 F HFFR | (Cu / SnCu) | 35,86             |
| 1751106702GY | RG 11/U-6 F HFFR | (Cu / Cu)   | 40,72             |

|              |                           |             |       |
|--------------|---------------------------|-------------|-------|
| 1750604452BZ | RG 6/U-4 F HFFR TRI SHLD  | (Cu / SnCu) | 16,99 |
| 1750606752BZ | RG 6/U-6 F HFFR TRI SHLD  | (Cu / Cu)   | 25,76 |
| 1751104452BZ | RG 11/U-4 F HFFR TRI SHLD | (Cu / SnCu) | 36,66 |
| 1751106752BZ | RG 11/U-6 F HFFR TRI SHLD | (Cu / Cu)   | 49,07 |

|              |                      |         |       |
|--------------|----------------------|---------|-------|
| 1755904102BZ | RG 59/U-4 F HFFR SAT | (Cu-Al) | 9,81  |
| 1750604102BZ | RG 6/U-4 F HFFR SAT  | (Cu-Al) | 13,91 |
| 1751104102BZ | RG 11/U-4 F HFFR SAT | (Cu-Al) | 30,16 |

### 50 Ohm FİZİKSEL KÖPÜRTMELİ KOAKSİYEL KABLolar PVC

| ÜRÜN KODU    | ÜRÜN CİNSİ | ÖZELLİK       | BİRİM FİYAT (₺/m) |
|--------------|------------|---------------|-------------------|
| 1500058010SH | RG 58 C/U  | (SnCu / Cu)   | 16,61             |
| 1500174100SH | RG 174 C/U | (SnCu / Cu)   | 8,05              |
| 1500213000SH | RG 213/U   | (Cu / Cu)     | 62,93             |
| 1500214000SH | RG 214/U   | (AgCu / AgCu) | 186,23            |
| 1505000000SH | IF-5D-FB   | (Cu / SnCu)   | 40,29             |

### 50 Ohm FİZİKSEL KÖPÜRTMELİ KOAKSİYEL KABLolar HFFR

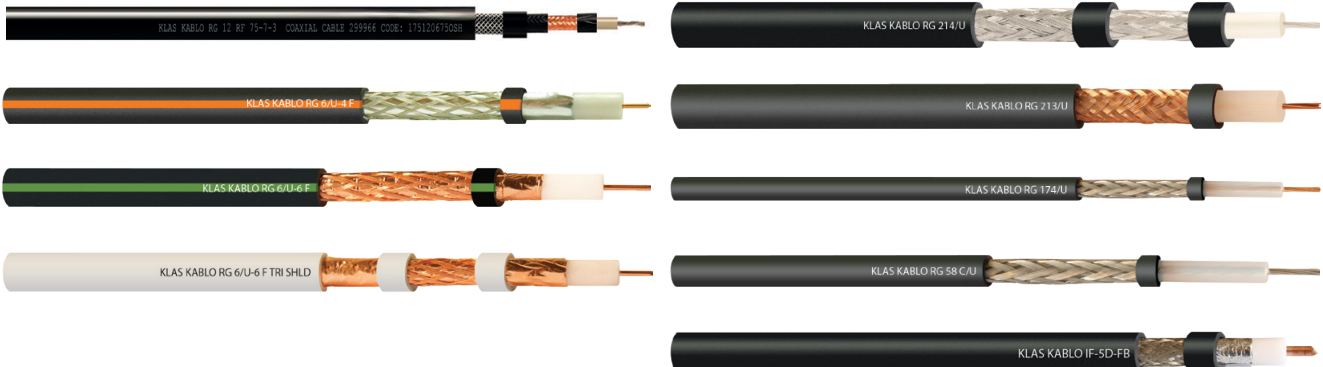
| ÜRÜN KODU    | ÜRÜN CİNSİ      | ÖZELLİK       | BİRİM FİYAT (₺/m) |
|--------------|-----------------|---------------|-------------------|
| 1500058012SH | RG 58 C/U HFFR  | (SnCu / Cu)   | 16,99             |
| 1500174102SH | RG 174 C/U HFFR | (SnCu / Cu)   | 8,30              |
| 1500213002SH | RG 213/U HFFR   | (Cu / Cu)     | 65,47             |
| 1500214002SH | RG 214/U HFFR   | (AgCu / AgCu) | 190,99            |
| 1505000002SH | IF-5D-FB HFFR   | (Cu / SnCu)   | 41,46             |

### 75 Ohm FİZİKSEL KÖPÜRTMELİ KOAKSİYEL KABLolar PE

| ÜRÜN KODU    | ÜRÜN CİNSİ   | ÖZELLİK   | BİRİM FİYAT (₺/m) |
|--------------|--------------|-----------|-------------------|
| 1750606701SH | RG 6/U-6 FP  | (Cu / Cu) | 18,29             |
| 1751106701SH | RG 11/U-6 FP | (Cu / Cu) | 36,75             |

### 75 Ohm TRAF0 VE DAĞITIM MERKEZLERİ VERİ KABLOSU PE

| ÜRÜN KODU | ÜRÜN CİNSİ             | ÖZELLİK     | BİRİM FİYAT (₺/m) |
|-----------|------------------------|-------------|-------------------|
| 10752271  | RG 12 RF 75-7-3 ZIRHLI | (AgCu / Cu) | 102,00            |
| 10752272  | RG 12 RF 75-7-1 ZIRHLI | (AgCu / Cu) | 97,01             |



## 75 Ohm CCTV KAMERA KABLOLARI PVC

| ÜRÜN KODU    | ÜRÜN CİNSİ                                      | ÖZELLİK | BİRİM FİYAT (₺/m) |
|--------------|---|---------|-------------------|
| 1120322100GR | CCTV 2+1 AL 75 Ohm+2x0,22 mm <sup>2</sup>       | (Cu-Al) | 10,52             |
| 1120355100GR | CCTV 2+1 AL 75 Ohm+2x0,5 mm <sup>2</sup>        | (Cu-Al) | 14,85             |
| 1140322100GR | CCTV 4+1 AL 75 Ohm+4x0,22 mm <sup>2</sup>       | (Cu-Al) | 14,37             |
| 1140325100GR | CCTV 4+1 AL 75 Ohm+2x0,22+2x0,5 mm <sup>2</sup> | (Cu-Al) | 18,96             |
| 1330322100GR | CCTV 12+1 AL 75 Ohm+12x0,22 mm <sup>2</sup>     | (Cu-Al) | 32,20             |

## 75 Ohm CCTV KAMERA KABLOLARI HFFR

| ÜRÜN KODU    | ÜRÜN CİNSİ   | ÖZELLİK | BİRİM FİYAT (₺/m) |
|--------------|--|---------|-------------------|
| 1120322102GR | CCTV 2+1 AL HFFR 75 Ohm+2x0,22 mm <sup>2</sup>       | (Cu-Al) | 10,86             |
| 1120355102GR | CCTV 2+1 AL HFFR 75 Ohm+2x0,5 mm <sup>2</sup>        | (Cu-Al) | 15,30             |
| 1140322102GR | CCTV 4+1 AL HFFR 75 Ohm+4x0,22 mm <sup>2</sup>       | (Cu-Al) | 14,71             |
| 1140325102GR | CCTV 4+1 AL HFFR 75 Ohm+2x0,22+2x0,5 mm <sup>2</sup> | (Cu-Al) | 19,31             |
| 1330322102GR | CCTV 12+1 AL HFFR 75 Ohm+12x0,22 mm <sup>2</sup>     | (Cu-Al) | 32,60             |

## DİYAFON KABLOLARI PVC

| ÜRÜN KODU    | ÜRÜN CİNSİ                  | ÖZELLİK (mm) | BİRİM FİYAT (₺/m) |
|--------------|-----------------------------|--------------|-------------------|
| 1400022100BZ | DT-4 4x0,22 mm <sup>2</sup> | 7x0,20       | 8,80              |
| 1410122100BZ | DT-6 6x0,22 mm <sup>2</sup> | 7x0,20       | 12,77             |
| 1420222100BZ | DT-8 8x0,22 mm <sup>2</sup> | 7x0,20       | 16,73             |
| 1420011000BZ | DT-8 8x0,14 mm <sup>2</sup> | 7x0,16       | 11,71             |

## DİYAFON KABLOLARI HFFR

| ÜRÜN KODU    | ÜRÜN CİNSİ                       | ÖZELLİK (mm) | BİRİM FİYAT (₺/m) |
|--------------|----------------------------------|--------------|-------------------|
| 1400022102BZ | DT-4 4x0,22 mm <sup>2</sup> HFFR | 7x0,20       | 9,05              |
| 1410122102BZ | DT-6 6x0,22 mm <sup>2</sup> HFFR | 7x0,20       | 13,23             |
| 1420222102BZ | DT-8 8x0,22 mm <sup>2</sup> HFFR | 7x0,20       | 17,02             |

## VERİ İLETİŞİM KABLOLARI PVC

| ÜRÜN KODU    | ÜRÜN CİNSİ   | KESİT      | BİRİM FİYAT (₺/m) |
|--------------|--------------|------------|-------------------|
| 2125240040GR | U/UTP Cat 5e | 4x2x24 AWG | 13,85             |
| 2130240040GR | F/UTP Cat 5e | 4x2x24 AWG | 17,54             |
| 2150230040GR | U/UTP Cat 6  | 4x2x23 AWG | 18,55             |
| 2150240040GR | U/UTP Cat 6  | 4x2x24 AWG | 16,91             |
| 2155230040GR | F/UTP Cat 6  | 4x2x23 AWG | 22,33             |
| 2155240040GR | F/UTP Cat 6  | 4x2x24 AWG | 20,87             |

## VERİ İLETİŞİM KABLOLARI HFFR

| ÜRÜN KODU    | ÜRÜN CİNSİ        | KESİT      | BİRİM FİYAT (₺/m) |
|--------------|-------------------|------------|-------------------|
| 2125240042GR | U/UTP Cat 5e LS0H | 4x2x24 AWG | 14,38             |
| 2130240042GR | F/UTP Cat 5e LS0H | 4x2x24 AWG | 18,24             |
| 2150230042GR | U/UTP Cat 6 LS0H  | 4x2x23 AWG | 19,33             |
| 2150240042GR | U/UTP Cat 6 LS0H  | 4x2x24 AWG | 17,51             |
| 2155230042GR | F/UTP Cat 6 LS0H  | 4x2x23 AWG | 23,17             |
| 2155240042GR | F/UTP Cat 6 LS0H  | 4x2x24 AWG | 21,91             |

|              |             |             |       |
|--------------|-------------|-------------|-------|
| 2710307900MR | PROFİBUS DP | 1x2x0,64 mm | 23,53 |
|--------------|-------------|-------------|-------|

|              |                  |             |       |
|--------------|------------------|-------------|-------|
| 2710307902MR | PROFİBUS DP LS0H | 1x2x0,64 mm | 24,40 |
|--------------|------------------|-------------|-------|

|              |                      |                          |       |
|--------------|----------------------|--------------------------|-------|
| 2042220020GR | RS422 LI-2Y(St)CY-TP | 2x2x0,22 mm <sup>2</sup> | 24,17 |
|--------------|----------------------|--------------------------|-------|

|              |                      |                          |       |
|--------------|----------------------|--------------------------|-------|
| 2042220022GR | RS422 LI-2Y(St)CH-TP | 2x2x0,22 mm <sup>2</sup> | 24,89 |
|--------------|----------------------|--------------------------|-------|

|              |                        |                          |       |
|--------------|------------------------|--------------------------|-------|
| 2045220020GR | RS422 LI-2Y(St)CY-PİMF | 2x2x0,22 mm <sup>2</sup> | 28,89 |
|--------------|------------------------|--------------------------|-------|

|              |                        |                          |       |
|--------------|------------------------|--------------------------|-------|
| 2045220022GR | RS422 LI-2Y(St)CH-PİMF | 2x2x0,22 mm <sup>2</sup> | 29,85 |
|--------------|------------------------|--------------------------|-------|

|              |                        |                          |       |
|--------------|------------------------|--------------------------|-------|
| 2052320020GR | RS485 LI-O2YS(St)CY-TP | 2x2x0,22 mm <sup>2</sup> | 24,42 |
|--------------|------------------------|--------------------------|-------|

|              |                        |                          |       |
|--------------|------------------------|--------------------------|-------|
| 2052320022GR | RS485 LI-O2YS(St)CH-TP | 2x2x0,22 mm <sup>2</sup> | 25,80 |
|--------------|------------------------|--------------------------|-------|

|              |                          |                          |       |
|--------------|--------------------------|--------------------------|-------|
| 2055320020GR | RS485 LI-O2YS(St)CY-PİMF | 2x2x0,22 mm <sup>2</sup> | 33,37 |
|--------------|--------------------------|--------------------------|-------|

|              |                          |                          |       |
|--------------|--------------------------|--------------------------|-------|
| 2055320022GR | RS485 LI-O2YS(St)CH-PİMF | 2x2x0,22 mm <sup>2</sup> | 35,83 |
|--------------|--------------------------|--------------------------|-------|

## LOAD-CELL KABLOLARI PVC

| ÜRÜN KODU | ÜRÜN CİNSİ | KESİT (mm <sup>2</sup> ) | BİRİM FİYAT (₺/m) |
|-----------|------------|--------------------------|-------------------|
| 99900555  | LOAD CELL  | 4X0,34                   | 27,94             |
| 99900006  | LOAD CELL  | 6X0,34                   | 39,53             |

## HARİCİ TIP VERİ İLETİŞİM KABLOLARI PE

| ÜRÜN KODU    | ÜRÜN CİNSİ                    | KESİT      | BİRİM FİYAT (₺/m) |
|--------------|-------------------------------|------------|-------------------|
| 2250230042SH | U/UTP Cat 6 PE                | 4x2x23 AWG | 19,79             |
| 2150240041SH | U/UTP Cat 6 PE                | 4x2x24 AWG | 18,46             |
| 2152230041SH | U/UTP Cat 6 PE - ÇELİK ZIRHLI | 4x2x23 AWG | 35,20             |

## YANGIN ALARM KABLolari PVC

| ÜRÜN KODU    | ÜRÜN CİNSİ    | KESİT                           | BİRİM FİYAT (₺/m) |
|--------------|---------------|---------------------------------|-------------------|
| 3510080010KM | J-Y(St)Y...Lg | 1x2x0,8+0,4 mm                  | 12,59             |
| 3510080020KM | J-Y(St)Y...Lg | 2x2x0,8+0,4 mm                  | 21,08             |
| 3510100010KM | J-Y(St)Y...Lg | 1x2x1+0,8 mm                    | 21,27             |
| 3510100020KM | J-Y(St)Y...Lg | 2x2x1+0,8 mm                    | 32,62             |
| 3510150010KM | J-Y(St)Y...Lg | 1x2x1,5 mm <sup>2</sup> +0,8 mm | 30,19             |
| 3510150020KM | J-Y(St)Y...Lg | 2x2x1,5 mm <sup>2</sup> +0,8 mm | 52,78             |

## YANGIN ALARM KABLolari HFFR

| ÜRÜN KODU    | ÜRÜN CİNSİ     | KESİT                           | BİRİM FİYAT (₺/m) |
|--------------|----------------|---------------------------------|-------------------|
| 3550080012KM | JE-H(St)H...Bd | 1x2x0,8+0,8 mm                  | 14,93             |
| 3550080022KM | JE-H(St)H...Bd | 2x2x0,8+0,8 mm                  | 23,14             |
| 3550100012KM | JE-H(St)H...Bd | 1x2x1+0,8 mm                    | 21,50             |
| 3550100022KM | JE-H(St)H...Bd | 2x2x1+0,8 mm                    | 34,15             |
| 3550150012KM | JE-H(St)H...Bd | 1x2x1,5 mm <sup>2</sup> +0,8 mm | 31,24             |
| 3550150022KM | JE-H(St)H...Bd | 2x2x1,5 mm <sup>2</sup> +0,8 mm | 54,22             |

## EIB - KNX BUS KABLolari PVC

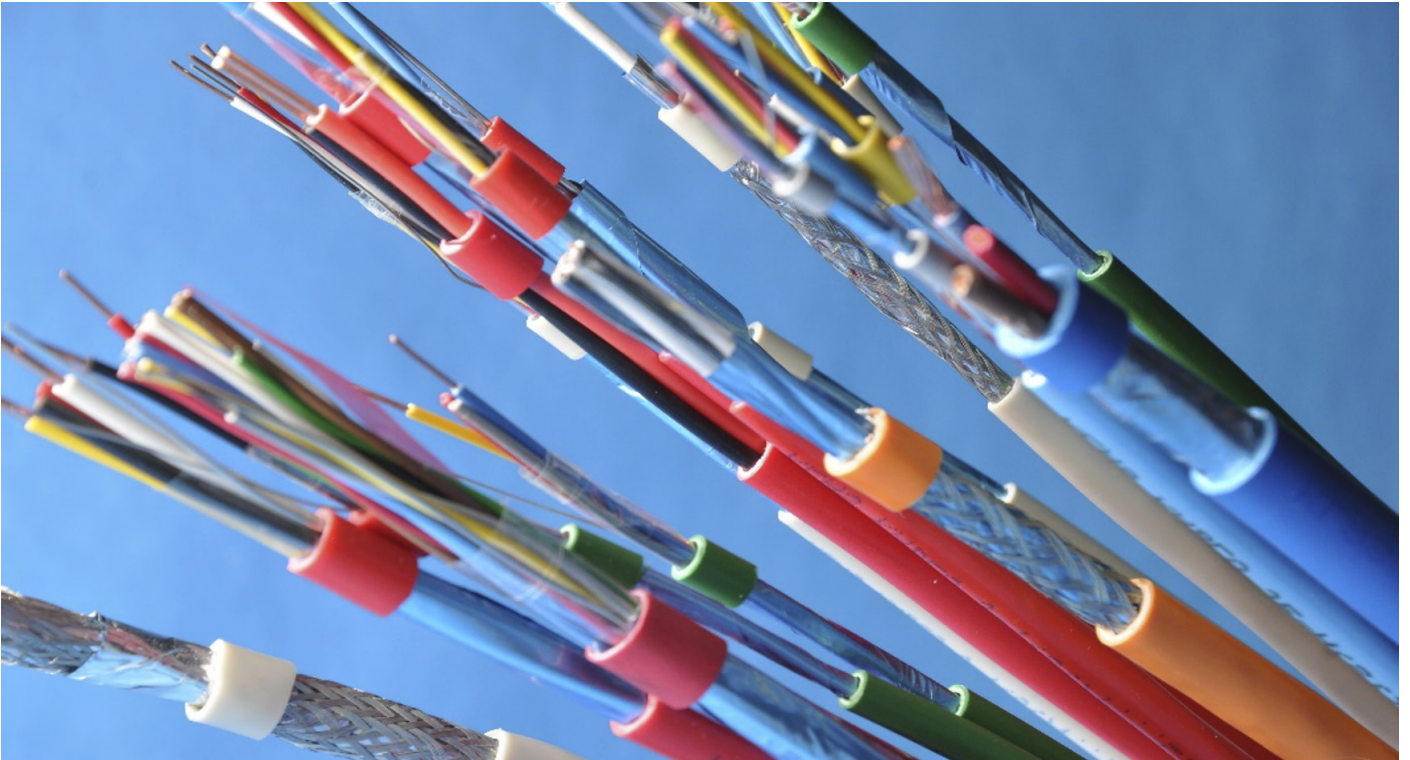
| ÜRÜN KODU    | ÜRÜN CİNSİ              | KESİT (mm)  | BİRİM FİYAT (₺/m) |
|--------------|-------------------------|-------------|-------------------|
| 2750080020YL | INSTABUS (EIB BUS) YCYM | 2x2x0,8+0,4 | 22,14             |

## EIB - KNX BUS KABLolari HFFR

| ÜRÜN KODU    | ÜRÜN CİNSİ              | KESİT (mm)  | BİRİM FİYAT (₺/m) |
|--------------|-------------------------|-------------|-------------------|
| 2750080022YL | INSTABUS (EIB BUS) HCHM | 2x2x0,8+0,4 | 23,07             |
| 2751080022YL | INSTABUS (EIB BUS) HCHM | 2x2x0,8+0,8 | 24,24             |

## YANGINA DAYANIKLI ALARM KABLolari HFFR - FE 180 PH 120

| ÜRÜN KODU    | ÜRÜN CİNSİ                   | KESİT                           | BİRİM FİYAT (₺/m) |
|--------------|------------------------------|---------------------------------|-------------------|
| 5355108001PR | JE-H(St)H...Bd FE 180 PH 120 | 1x2x0,8+0,8 mm                  | 18,69             |
| 5355108002PR | JE-H(St)H...Bd FE 180 PH 120 | 2x2x0,8+0,8 mm                  | 28,56             |
| 5355110001PR | JE-H(St)H...Bd FE 180 PH 120 | 1x2x1+0,8 mm                    | 23,57             |
| 5355110002PR | JE-H(St)H...Bd FE 180 PH 120 | 2x2x1+0,8 mm                    | 38,13             |
| 5355115001PR | JE-H(St)H...Bd FE 180 PH 120 | 1x2x1,5 mm <sup>2</sup> +0,8 mm | 35,08             |
| 5355115002PR | JE-H(St)H...Bd FE 180 PH 120 | 2x2x1,5 mm <sup>2</sup> +0,8 mm | 59,94             |



### YANGINA DAYANIKLI SİNYAL VE KONTROL KABLORARI HFFR - FE 180 PH 120

| ÜRÜN KODU    | ÜRÜN CİNSİ          | KESİT (mm <sup>2</sup> ) | BİRİM FİYAT (₺/m) |
|--------------|---------------------|--------------------------|-------------------|
| 5422100802PR | LIHCH FE 180 PH 120 | 2x0,75                   | 23,19             |
| 5422100803PR | LIHCH FE 180 PH 120 | 3x0,75                   | 29,65             |
| 5422100804PR | LIHCH FE 180 PH 120 | 4x0,75                   | 38,18             |
| 5422100805PR | LIHCH FE 180 PH 120 | 5x0,75                   | 46,26             |
| 5422100806PR | LIHCH FE 180 PH 120 | 6x0,75                   | 54,04             |
| 5422100807PR | LIHCH FE 180 PH 120 | 7x0,75                   | 60,67             |
| 5422100808PR | LIHCH FE 180 PH 120 | 8x0,75                   | 68,72             |
| 5422100810PR | LIHCH FE 180 PH 120 | 10x0,75                  | 83,64             |

|              |                     |      |        |
|--------------|---------------------|------|--------|
| 5422101002PR | LIHCH FE 180 PH 120 | 2x1  | 27,50  |
| 5422101003PR | LIHCH FE 180 PH 120 | 3x1  | 35,52  |
| 5422101004PR | LIHCH FE 180 PH 120 | 4x1  | 46,02  |
| 5422101005PR | LIHCH FE 180 PH 120 | 5x1  | 58,20  |
| 5422101006PR | LIHCH FE 180 PH 120 | 6x1  | 65,80  |
| 5422101007PR | LIHCH FE 180 PH 120 | 7x1  | 72,29  |
| 5422101008PR | LIHCH FE 180 PH 120 | 8x1  | 83,91  |
| 5422101010PR | LIHCH FE 180 PH 120 | 10x1 | 102,44 |

|              |                     |        |        |
|--------------|---------------------|--------|--------|
| 5422101502PR | LIHCH FE 180 PH 120 | 2x1,5  | 36,75  |
| 5422101503PR | LIHCH FE 180 PH 120 | 3x1,5  | 49,66  |
| 5422101504PR | LIHCH FE 180 PH 120 | 4x1,5  | 61,28  |
| 5422101505PR | LIHCH FE 180 PH 120 | 5x1,5  | 79,62  |
| 5422101506PR | LIHCH FE 180 PH 120 | 6x1,5  | 92,13  |
| 5422101507PR | LIHCH FE 180 PH 120 | 7x1,5  | 103,13 |
| 5422101508PR | LIHCH FE 180 PH 120 | 8x1,5  | 117,29 |
| 5422101510PR | LIHCH FE 180 PH 120 | 10x1,5 | 148,07 |

|              |                     |       |        |
|--------------|---------------------|-------|--------|
| 5422102502PR | LIHCH FE 180 PH 120 | 2x2,5 | 51,63  |
| 5422102503PR | LIHCH FE 180 PH 120 | 3x2,5 | 73,72  |
| 5422102504PR | LIHCH FE 180 PH 120 | 4x2,5 | 94,07  |
| 5422102505PR | LIHCH FE 180 PH 120 | 5x2,5 | 115,67 |
| 5422102507PR | LIHCH FE 180 PH 120 | 7x2,5 | 149,35 |

### YANGINA DAYANIKLI SİNYAL VE KONTROL KABLORARI HFFR - FE 180 PH 120

| ÜRÜN KODU    | ÜRÜN CİNSİ         | KESİT (mm <sup>2</sup> ) | BİRİM FİYAT (₺/m) |
|--------------|--------------------|--------------------------|-------------------|
| 5412100802PR | LIHH FE 180 PH 120 | 2x0,75                   | 17,62             |
| 5412100803PR | LIHH FE 180 PH 120 | 3x0,75                   | 21,32             |
| 5412100804PR | LIHH FE 180 PH 120 | 4x0,75                   | 30,41             |
| 5412100808PR | LIHH FE 180 PH 120 | 8x0,75                   | 58,03             |

|              |                    |     |       |
|--------------|--------------------|-----|-------|
| 5412101002PR | LIHH FE 180 PH 120 | 2x1 | 21,16 |
| 5412101003PR | LIHH FE 180 PH 120 | 3x1 | 28,60 |
| 5412101004PR | LIHH FE 180 PH 120 | 4x1 | 37,55 |
| 5412101008PR | LIHH FE 180 PH 120 | 8x1 | 74,47 |

|              |                    |       |        |
|--------------|--------------------|-------|--------|
| 5412101502PR | LIHH FE 180 PH 120 | 2x1,5 | 29,60  |
| 5412101503PR | LIHH FE 180 PH 120 | 3x1,5 | 41,88  |
| 5412101504PR | LIHH FE 180 PH 120 | 4x1,5 | 54,61  |
| 5412101508PR | LIHH FE 180 PH 120 | 8x1,5 | 104,93 |

|              |                    |       |       |
|--------------|--------------------|-------|-------|
| 5412102502PR | LIHH FE 180 PH 120 | 2x2,5 | 43,77 |
| 5412102503PR | LIHH FE 180 PH 120 | 3x2,5 | 61,73 |
| 5412102504PR | LIHH FE 180 PH 120 | 4x2,5 | 81,53 |

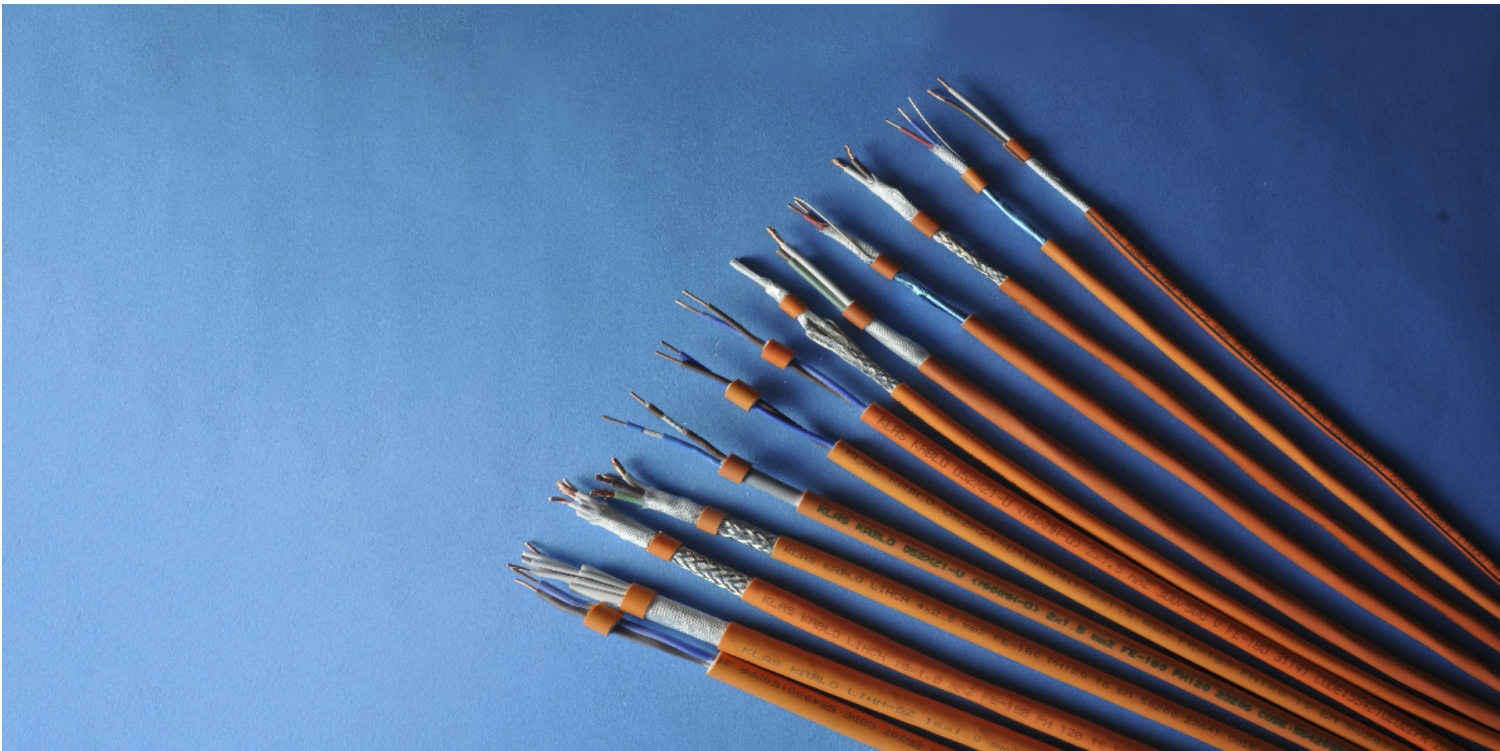
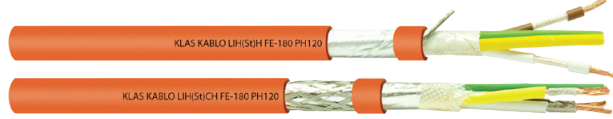


## YANGINA DAYANIKLI SİNYAL VE KONTROL KABLolari HFFR - FE 180 PH 120

| ÜRÜN KODU    | ÜRÜN CİNSİ             | KESİT (mm <sup>2</sup> ) | BİRİM FİYAT (₺/m) |
|--------------|------------------------|--------------------------|-------------------|
| 5432100802PR | LIH(St)H FE 180 PH 120 | 2x0,75+0,5               | 21,61             |
| 5432100803PR | LIH(St)H FE 180 PH 120 | 3x0,75+0,5               | 27,71             |
| 5432100804PR | LIH(St)H FE 180 PH 120 | 4x0,75+0,5               | 35,22             |
| 5432100808PR | LIH(St)H FE 180 PH 120 | 8x0,75+0,5               | 62,66             |
| 5432101002PR | LIH(St)H FE 180 PH 120 | 2x1+0,5                  | 25,52             |
| 5432101003PR | LIH(St)H FE 180 PH 120 | 3x1+0,5                  | 31,20             |
| 5432101004PR | LIH(St)H FE 180 PH 120 | 4x1+0,5                  | 41,96             |
| 5432101008PR | LIH(St)H FE 180 PH 120 | 8x1+0,5                  | 80,82             |
| 5432101502PR | LIH(St)H FE 180 PH 120 | 2x1,5+0,5                | 33,78             |
| 5432101503PR | LIH(St)H FE 180 PH 120 | 3x1,5+0,5                | 45,31             |
| 5432101504PR | LIH(St)H FE 180 PH 120 | 4x1,5+0,5                | 58,00             |
| 5432101508PR | LIH(St)H FE 180 PH 120 | 8x1,5+0,5                | 109,56            |
| 5432102502PR | LIH(St)H FE 180 PH 120 | 2x2,5+0,5                | 47,93             |
| 5432102503PR | LIH(St)H FE 180 PH 120 | 3x2,5+0,5                | 65,83             |
| 5432102504PR | LIH(St)H FE 180 PH 120 | 4x2,5+0,5                | 82,00             |

## YANGINA DAYANIKLI SİNYAL VE KONTROL KABLolari HFFR - FE 180 PH 120

| ÜRÜN KODU    | ÜRÜN CİNSİ              | KESİT (mm <sup>2</sup> ) | BİRİM FİYAT (₺/m) |
|--------------|-------------------------|--------------------------|-------------------|
| 5442100802PR | LIH(St)CH FE 180 PH 120 | 2x0,75                   | 22,98             |
| 5442100803PR | LIH(St)CH FE 180 PH 120 | 3x0,75                   | 30,10             |
| 5442100804PR | LIH(St)CH FE 180 PH 120 | 4x0,75                   | 36,90             |
| 5442101002PR | LIH(St)CH FE 180 PH 120 | 2x1                      | 27,84             |
| 5442101003PR | LIH(St)CH FE 180 PH 120 | 3x1                      | 38,27             |
| 5442101004PR | LIH(St)CH FE 180 PH 120 | 4x1                      | 46,39             |
| 5442101502PR | LIH(St)CH FE 180 PH 120 | 2x1,5                    | 37,01             |
| 5442101503PR | LIH(St)CH FE 180 PH 120 | 3x1,5                    | 48,81             |
| 5442101504PR | LIH(St)CH FE 180 PH 120 | 4x1,5                    | 62,15             |
| 5442102502PR | LIH(St)CH FE 180 PH 120 | 2x2,5                    | 52,19             |
| 5442102503PR | LIH(St)CH FE 180 PH 120 | 3x2,5                    | 72,11             |
| 5442102504PR | LIH(St)CH FE 180 PH 120 | 4x2,5                    | 91,74             |



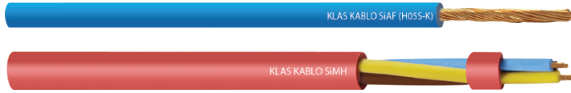


## SİLİKON İZOLELİ KABLAR

| ÜRÜN KODU    | ÜRÜN CİNSİ | KESİT (mm <sup>2</sup> ) | BİRİM FİYAT (₺/m) |
|--------------|------------|--------------------------|-------------------|
| 7512000501SH | SI AF      | 1x0,5                    | 5,55              |
| 7512000801SH | SI AF      | 1x0,75                   | 7,53              |
| 7512001001SH | SI AF      | 1x1                      | 9,58              |
| 7512001501SH | SI AF      | 1x1,5                    | 12,88             |
| 7512002501SH | SI AF      | 1x2,5                    | 20,44             |
| 7512004001SH | SI AF      | 1x4                      | 32,79             |
| 7512006001SH | SI AF      | 1x6                      | 46,59             |
| 7512010001SH | SI AF      | 1x10                     | 80,28             |
| 7512016001SH | SI AF      | 1X16                     | 125,38            |

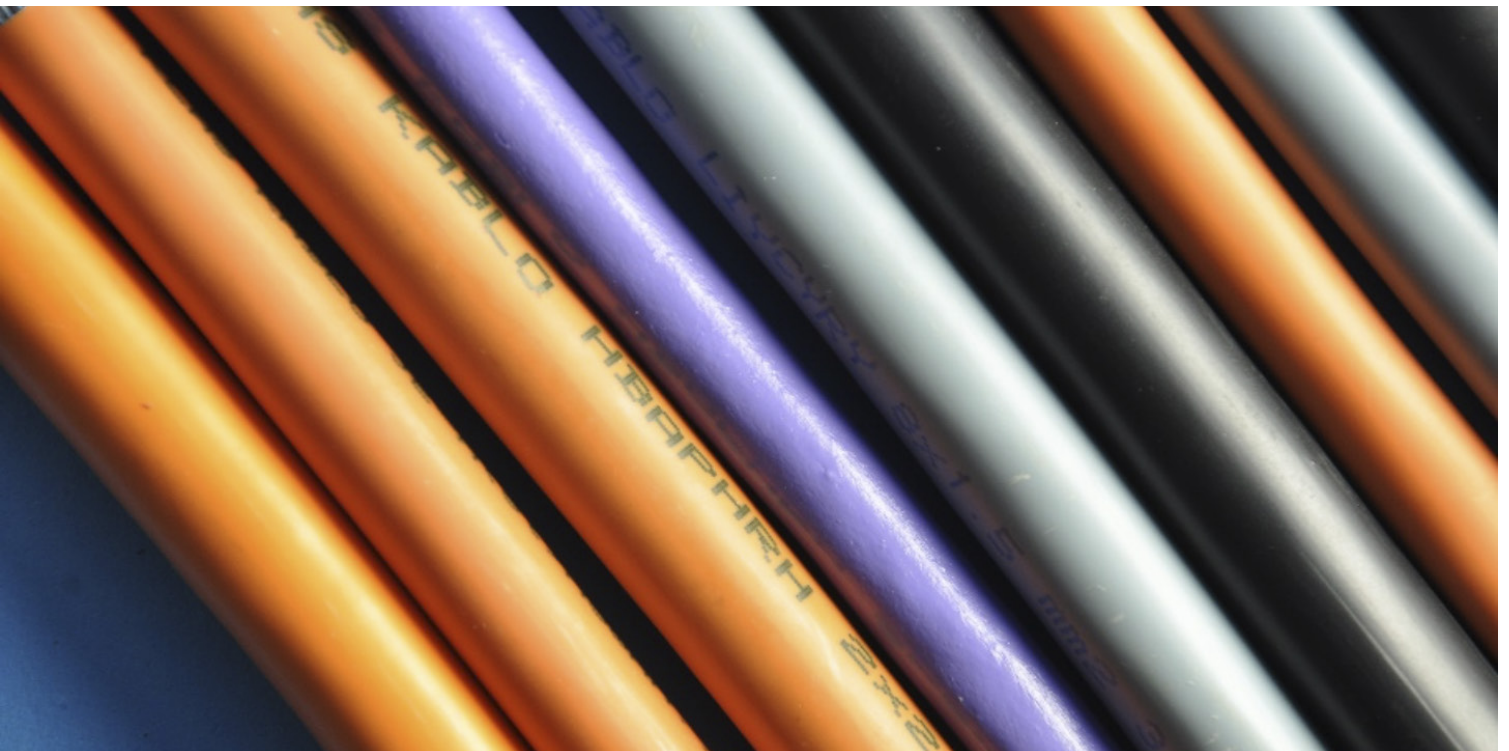
## SOLAR KABLORAR

| ÜRÜN KODU    | ÜRÜN CİNSİ | KESİT (mm <sup>2</sup> ) | BİRİM FİYAT (₺/m) |
|--------------|------------|--------------------------|-------------------|
| 7757400021SH | PV1-F      | 1x1,5                    | 15,55             |
| 7757400031SH | PV1-F      | 1x2,5                    | 22,60             |
| 7757400041SH | PV1-F      | 1x4                      | 33,67             |
| 7757400061SH | PV1-F      | 1x6                      | 47,53             |
| 7757400101SH | PV1-F      | 1x10                     | 76,77             |



## SİLİKON İZOLELİ KABLORAR FE 180 PH 120

| ÜRÜN KODU    | ÜRÜN CİNSİ         | KESİT (mm <sup>2</sup> ) | BİRİM FİYAT (₺/m) |
|--------------|--------------------|--------------------------|-------------------|
| 5752000502KM | SIMH FE 180 PH 120 | 2x0,5                    | 26,33             |
| 5752000503KM | SIMH FE 180 PH 120 | 3G0,5                    | 30,53             |
| 5752000504KM | SIMH FE 180 PH 120 | 4G0,5                    | 39,69             |
| 5752000505KM | SIMH FE 180 PH 120 | 5G0,5                    | 47,45             |
| 5752000802KM | SIMH FE 180 PH 120 | 2x0,75                   | 31,16             |
| 5752000803KM | SIMH FE 180 PH 120 | 3G0,75                   | 38,01             |
| 5752000804KM | SIMH FE 180 PH 120 | 4G0,75                   | 50,02             |
| 5752000805KM | SIMH FE 180 PH 120 | 5G0,75                   | 59,77             |
| 5752001002KM | SIMH FE 180 PH 120 | 2x1                      | 38,54             |
| 5752001003KM | SIMH FE 180 PH 120 | 3G1                      | 48,93             |
| 5752001004KM | SIMH FE 180 PH 120 | 4G1                      | 59,81             |
| 5752001005KM | SIMH FE 180 PH 120 | 5G1                      | 71,89             |
| 5752001502KM | SIMH FE 180 PH 120 | 2x1,5                    | 48,95             |
| 5752001503KM | SIMH FE 180 PH 120 | 3G1,5                    | 61,00             |
| 5752001504KM | SIMH FE 180 PH 120 | 4G1,5                    | 75,30             |
| 5752001505KM | SIMH FE 180 PH 120 | 5G1,5                    | 90,86             |
| 5752002502KM | SIMH FE 180 PH 120 | 2x2,5                    | 75,76             |
| 5752002503KM | SIMH FE 180 PH 120 | 3G2,5                    | 94,87             |
| 5752002504KM | SIMH FE 180 PH 120 | 4G2,5                    | 117,58            |
| 5752002505KM | SIMH FE 180 PH 120 | 5G2,5                    | 141,98            |



## DAHİLİ TİP TELEFON KABLOLARI PVC

| ÜRÜN KODU    | ÜRÜN CİNSİ | KESİT (mm)    | BİRİM FİYAT (₺/m) |
|--------------|------------|---------------|-------------------|
| 3260050010GR | PDV (Cu)   | 1x2x0,5+0,5   | 5,34              |
| 3260050020GR | PDV (Cu)   | 2x2x0,5+0,5   | 8,51              |
| 3260050030GR | PDV (Cu)   | 3x2x0,5+0,5   | 11,75             |
| 3260050040GR | PDV (Cu)   | 4x2x0,5+0,5   | 15,40             |
| 3260050060GR | PDV (Cu)   | 6x2x0,5+0,5   | 21,70             |
| 3260050100GR | PDV (Cu)   | 10x2x0,5+0,5  | 34,13             |
| 3260050200GR | PDV (Cu)   | 20x2x0,5+0,5  | 63,26             |
| 3260050300GR | PDV (Cu)   | 30x2x0,5+0,5  | 92,43             |
| 3260050500GR | PDV (Cu)   | 50x2x0,5+0,5  | 150,85            |
| 3260051000GR | PDV (Cu)   | 100x2x0,5+0,5 | 297,23            |

## DAHİLİ TİP TELEFON KABLOLARI HFFR

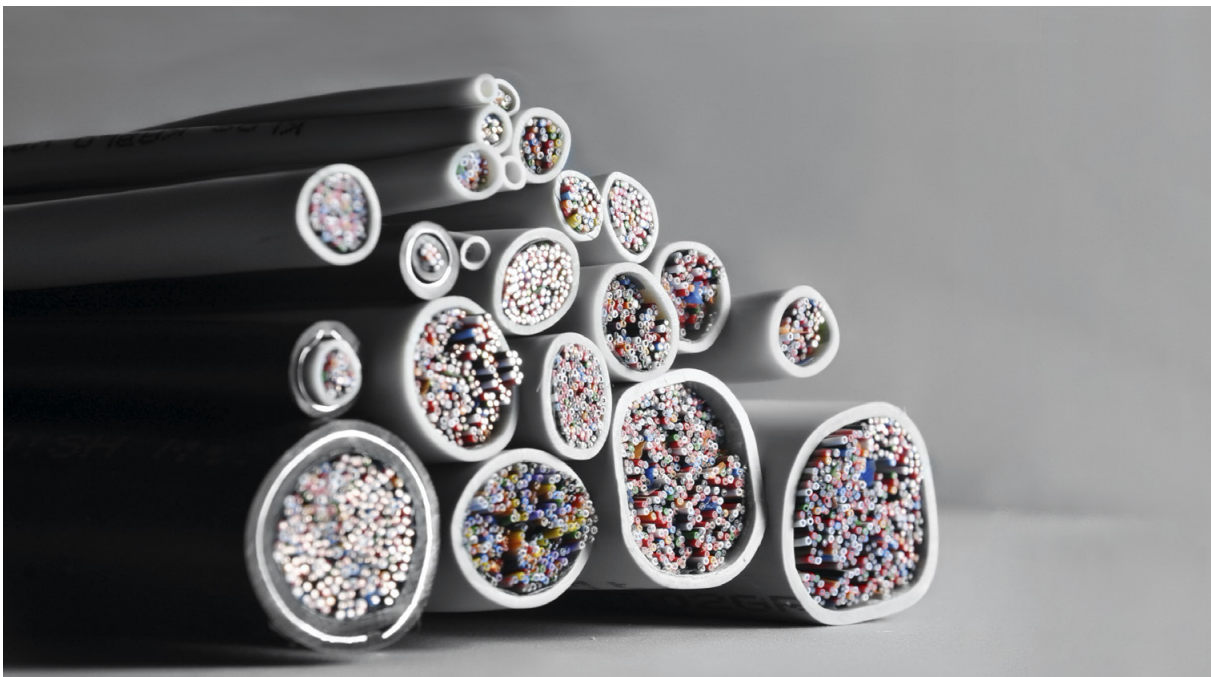
| ÜRÜN KODU    | ÜRÜN CİNSİ | KESİT (mm)    | BİRİM FİYAT (₺/m) |
|--------------|------------|---------------|-------------------|
| 3230050012GR | HBH (Cu)   | 1x2x0,5+0,5   | 5,54              |
| 3230050022GR | HBH (Cu)   | 2x2x0,5+0,5   | 8,81              |
| 3230050032GR | HBH (Cu)   | 3x2x0,5+0,5   | 12,15             |
| 3230050042GR | HBH (Cu)   | 4x2x0,5+0,5   | 15,95             |
| 3230050062GR | HBH (Cu)   | 6x2x0,5+0,5   | 22,43             |
| 3230050102GR | HBH (Cu)   | 10x2x0,5+0,5  | 35,30             |
| 3230050202GR | HBH (Cu)   | 20x2x0,5+0,5  | 64,98             |
| 3230050302GR | HBH (Cu)   | 30x2x0,5+0,5  | 95,10             |
| 3230050502GR | HBH (Cu)   | 50x2x0,5+0,5  | 155,05            |
| 3230051002GR | HBH (Cu)   | 100x2x0,5+0,5 | 305,22            |

## HARİCİ TİP TELEFON KABLOLARI DOLGUSUZ PE

| ÜRÜN KODU    | ÜRÜN CİNSİ | KESİT (mm) | BİRİM FİYAT (₺/m) |
|--------------|------------|------------|-------------------|
| 3135050061SH | KPD-PAP    | 6x2x0,5    | 36,90             |
| 3135050101SH | KPD-PAP    | 10x2x0,5   | 52,34             |
| 3135050201SH | KPD-PAP    | 20x2x0,5   | 87,07             |
| 3135050301SH | KPD-PAP    | 30x2x0,5   | 120,35            |
| 3135050501SH | KPD-PAP    | 50x2x0,5   | 195,31            |
| 3135051001SH | KPD-PAP    | 100x2x0,5  | 369,65            |
| 3135090101SH | KPD-PAP    | 10x2x0,9   | 135,33            |
| 3135090201SH | KPD-PAP    | 20x2x0,9   | 246,13            |
| 3135090301SH | KPD-PAP    | 30x2x0,9   | 353,87            |
| 3135090501SH | KPD-PAP    | 50x2x0,9   | 585,70            |
| 3135091001SH | KPD-PAP    | 100x2x0,9  | 1.127,19          |

## HARİCİ TİP TELEFON KABLOLARI DOLGULU PE

| ÜRÜN KODU    | ÜRÜN CİNSİ | KESİT (mm) | BİRİM FİYAT (₺/m) |
|--------------|------------|------------|-------------------|
| 3140050061SH | KPDF-AP    | 6x2x0,5    | 41,87             |
| 3140050101SH | KPDF-AP    | 10x2x0,5   | 55,39             |
| 3140050201SH | KPDF-AP    | 20x2x0,5   | 92,19             |
| 3140050301SH | KPDF-AP    | 30x2x0,5   | 131,69            |
| 3140050501SH | KPDF-AP    | 50x2x0,5   | 207,12            |
| 3140051001SH | KPDF-AP    | 100x2x0,5  | 382,94            |
| 3140090101SH | KPDF-AP    | 10x2x0,9   | 142,19            |
| 3140090201SH | KPDF-AP    | 20x2x0,9   | 260,96            |
| 3140090301SH | KPDF-AP    | 30x2x0,9   | 369,48            |
| 3140090501SH | KPDF-AP    | 50x2x0,9   | 613,36            |
| 3140091001SH | KPDF-AP    | 100x2x0,9  | 1.175,20          |



## KORDON KABLolar PVC

| ÜRÜN KODU    | ÜRÜN CİNSİ     | KESİT (mm <sup>2</sup> ) | BİRİM FİYAT (₺/m) |
|--------------|----------------|--------------------------|-------------------|
| 7059830820BZ | H03VH-H RENKLİ | 2x0,75                   | 11,68             |
| 7059830820NT | H03VH-H ŞEFFAF | 2x0,75                   | 12,34             |
| 7059871020BZ | H03VH-H RENKLİ | 2x1                      | 14,82             |
| 7059871020NT | H03VH-H ŞEFFAF | 2x1                      | 16,03             |
| 7059831520BK | H05VH-H RENKLİ | 2x1,5                    | 20,15             |
| 7059831520NK | H05VH-H ŞEFFAF | 2x1,5                    | 20,97             |

## BALIK SIRTı KABLolar PVC

| ÜRÜN KODU    | ÜRÜN CİNSİ | KESİT (mm <sup>2</sup> ) | BİRİM FİYAT (₺/m) |
|--------------|------------|--------------------------|-------------------|
| 7059800520BZ | H03VH2-F   | 2x0,5                    | 9,13              |
| 7059800820BZ | H03VH2-F   | 2x0,75                   | 12,60             |
| 7059811020BZ | H05VH2-F   | 2X1                      | 18,21             |
| 7059811520BZ | H05VH2-F   | 2X1,5                    | 24,71             |
| 7059842521SH | H05VH2-F   | 2X2,5                    | 35,35             |

## HARİCİ TİP TELEFON TESİSATI BAĞLANTI KABLoları

| ÜRÜN KODU | ÜRÜN CİNSİ         | KESİT (mm) | BİRİM FİYAT (₺/m) |
|-----------|--------------------|------------|-------------------|
| 38210801  | BPDT               | 2X0,8      | 8,71              |
| 38210802  | BAPDT (ASKI TELLİ) | 2X0,8+1,2  | 9,41              |
| 38211002  | BAPDT (ASKI TELLİ) | 2x1+1,4    | 16,07             |

## MONTAJ KABLoları PVC

| ÜRÜN KODU | ÜRÜN CİNSİ              | KESİT                  | BİRİM FİYAT (₺/m) |
|-----------|-------------------------|------------------------|-------------------|
| 08410309  | LIY (SnCu) (14x0,15 mm) | 1x0,25 mm <sup>2</sup> | 2,32              |
| 08410409  | LIY (SnCu) (7x0,25 mm)  | 1x0,34 mm <sup>2</sup> | 3,04              |

## KÖKEN KABLoları PVC

| ÜRÜN KODU    | ÜRÜN CİNSİ | KESİT       | BİRİM FİYAT (₺/m) |
|--------------|------------|-------------|-------------------|
| 3301260020GM | 2'Lİ KÖKEN | 2x(7x26AWG) | 4,84              |
| 3301260040GM | 4'LÜ KÖKEN | 4x(7x26AWG) | 7,89              |
| 3301260060GM | 6'Lİ KÖKEN | 6x(7x26AWG) | 11,26             |
| 3301260080GM | 8'Lİ KÖKEN | 8x(7x26AWG) | 15,98             |

|            |          |          |      |
|------------|----------|----------|------|
| 99900821BZ | NYA (Cu) | 1x0,5 mm | 1,66 |
| 99900811BZ | NYA (Cu) | 1x0,8 mm | 4,06 |

|            |                           |          |      |
|------------|---------------------------|----------|------|
| 99900376MB | ZİL VE PATLATMA TELİ (Cu) | 2x0,5 mm | 3,01 |
| 3710060010 | ZİL VE PATLATMA TELİ (Cu) | 2x0,6 mm | 4,40 |

|            |                    |          |      |
|------------|--------------------|----------|------|
| 99901376MB | CAMPER TELİ (SnCu) | 2x0,5 mm | 3,12 |
| 99901375MB | CAMPER TELİ (SnCu) | 2x0,6 mm | 4,50 |



## SİNYAL VE KUMANDA KABLOLARI PVC

| ÜRÜN KODU    | ÜRÜN CİNSİ | KESİT (mm <sup>2</sup> ) | BİRİM FİYAT (₺/m) |
|--------------|------------|--------------------------|-------------------|
| 4100002020GR | LIYY       | 2x0,22                   | 4,97              |
| 4100002030GR | LIYY       | 3x0,22                   | 6,92              |
| 4100002040GR | LIYY       | 4x0,22                   | 9,23              |
| 4100002050GR | LIYY       | 5x0,22                   | 11,05             |
| 4100002060GR | LIYY       | 6x0,22                   | 13,34             |
| 4100002070GR | LIYY       | 7x0,22                   | 15,48             |
| 4100002080GR | LIYY       | 8x0,22                   | 17,48             |
| 4100002100GR | LIYY       | 10x0,22                  | 21,70             |
| 4100002120GR | LIYY       | 12x0,22                  | 25,52             |

|              |      |         |       |
|--------------|------|---------|-------|
| 4100004020GR | LIYY | 2x0,34  | 7,21  |
| 4100004030GR | LIYY | 3x0,34  | 10,05 |
| 4100004040GR | LIYY | 4x0,34  | 13,13 |
| 4100004050GR | LIYY | 5x0,34  | 16,54 |
| 4100004060GR | LIYY | 6x0,34  | 19,73 |
| 4100004070GR | LIYY | 7x0,34  | 22,39 |
| 4100004080GR | LIYY | 8x0,34  | 25,44 |
| 4100004100GR | LIYY | 10x0,34 | 31,64 |
| 4100004120GR | LIYY | 12x0,34 | 37,48 |

|              |      |        |       |
|--------------|------|--------|-------|
| 4100005020GR | LIYY | 2x0,5  | 9,64  |
| 4100005030GR | LIYY | 3x0,5  | 13,52 |
| 4100005040GR | LIYY | 4x0,5  | 17,48 |
| 4100005050GR | LIYY | 5x0,5  | 21,73 |
| 4100005060GR | LIYY | 6x0,5  | 25,84 |
| 4100005070GR | LIYY | 7x0,5  | 29,84 |
| 4100005080GR | LIYY | 8x0,5  | 34,40 |
| 4100005100GR | LIYY | 10x0,5 | 41,90 |
| 4100005120GR | LIYY | 12x0,5 | 50,04 |

|              |      |         |       |
|--------------|------|---------|-------|
| 4100008020GR | LIYY | 2x0,75  | 13,19 |
| 4100008030GR | LIYY | 3x0,75  | 18,72 |
| 4100008040GR | LIYY | 4x0,75  | 24,55 |
| 4100008050GR | LIYY | 5x0,75  | 31,01 |
| 4100008060GR | LIYY | 6x0,75  | 37,08 |
| 4100008070GR | LIYY | 7x0,75  | 43,08 |
| 4100008080GR | LIYY | 8x0,75  | 48,40 |
| 4100008100GR | LIYY | 10x0,75 | 61,54 |
| 4100008120GR | LIYY | 12x0,75 | 72,46 |

## SİNYAL VE KUMANDA KABLOLARI HFFR

| ÜRÜN KODU    | ÜRÜN CİNSİ | KESİT (mm <sup>2</sup> ) | BİRİM FİYAT (₺/m) |
|--------------|------------|--------------------------|-------------------|
| 4120002022GR | LIHH       | 2x0,22                   | 5,14              |
| 4120002032GR | LIHH       | 3x0,22                   | 7,38              |
| 4120002042GR | LIHH       | 4x0,22                   | 9,49              |
| 4120002052GR | LIHH       | 5x0,22                   | 11,37             |
| 4120002062GR | LIHH       | 6x0,22                   | 13,65             |
| 4120002072GR | LIHH       | 7x0,22                   | 15,90             |
| 4120002082GR | LIHH       | 8x0,22                   | 17,94             |
| 4120002102GR | LIHH       | 10x0,22                  | 22,27             |
| 4120002122GR | LIHH       | 12x0,22                  | 26,12             |

|              |      |         |       |
|--------------|------|---------|-------|
| 4120004022GR | LIHH | 2x0,34  | 7,54  |
| 4120004032GR | LIHH | 3x0,34  | 10,46 |
| 4120004042GR | LIHH | 4x0,34  | 13,59 |
| 4120004052GR | LIHH | 5x0,34  | 16,93 |
| 4120004062GR | LIHH | 6x0,34  | 20,19 |
| 4120004072GR | LIHH | 7x0,34  | 22,73 |
| 4120004082GR | LIHH | 8x0,34  | 25,79 |
| 4120004102GR | LIHH | 10x0,34 | 32,71 |
| 4120004122GR | LIHH | 12x0,34 | 38,55 |

|              |      |        |       |
|--------------|------|--------|-------|
| 4120005022GR | LIHH | 2x0,5  | 9,84  |
| 4120005032GR | LIHH | 3x0,5  | 13,82 |
| 4120005042GR | LIHH | 4x0,5  | 17,95 |
| 4120005052GR | LIHH | 5x0,5  | 22,46 |
| 4120005062GR | LIHH | 6x0,5  | 27,12 |
| 4120005072GR | LIHH | 7x0,5  | 30,45 |
| 4120005082GR | LIHH | 8x0,5  | 35,70 |
| 4120005102GR | LIHH | 10x0,5 | 42,81 |
| 4120005122GR | LIHH | 12x0,5 | 50,99 |

|              |      |         |       |
|--------------|------|---------|-------|
| 4120008022GR | LIHH | 2x0,75  | 13,44 |
| 4120008032GR | LIHH | 3x0,75  | 19,13 |
| 4120008042GR | LIHH | 4x0,75  | 25,04 |
| 4120008052GR | LIHH | 5x0,75  | 32,04 |
| 4120008062GR | LIHH | 6x0,75  | 38,16 |
| 4120008072GR | LIHH | 7x0,75  | 44,06 |
| 4120008082GR | LIHH | 8x0,75  | 49,40 |
| 4120008102GR | LIHH | 10x0,75 | 62,93 |
| 4120008122GR | LIHH | 12x0,75 | 74,12 |



## SİNYAL VE KUMANDA KABLOLARI PVC

| ÜRÜN KODU    | ÜRÜN CİNSİ | KESİT (mm <sup>2</sup> ) | BİRİM FİYAT (₺/m) |
|--------------|------------|--------------------------|-------------------|
| 4100010020GR | LIYY       | 2x1                      | 16,43             |
| 4100010030GR | LIYY       | 3x1                      | 23,34             |
| 4100010040GR | LIYY       | 4x1                      | 30,76             |
| 4100010050GR | LIYY       | 5x1                      | 38,75             |
| 4100010060GR | LIYY       | 6x1                      | 46,55             |
| 4100010070GR | LIYY       | 7x1                      | 52,92             |
| 4100010080GR | LIYY       | 8x1                      | 60,61             |
| 4100010100GR | LIYY       | 10x1                     | 74,53             |
| 4100010120GR | LIYY       | 12x1                     | 90,54             |

|              |      |        |        |
|--------------|------|--------|--------|
| 4100015020GR | LIYY | 2x1,5  | 23,10  |
| 4100015030GR | LIYY | 3x1,5  | 34,46  |
| 4100015040GR | LIYY | 4x1,5  | 44,51  |
| 4100015050GR | LIYY | 5x1,5  | 55,91  |
| 4100015060GR | LIYY | 6x1,5  | 67,10  |
| 4100015070GR | LIYY | 7x1,5  | 76,59  |
| 4100015080GR | LIYY | 8x1,5  | 87,25  |
| 4100015100GR | LIYY | 10x1,5 | 111,51 |
| 4100015120GR | LIYY | 12x1,5 | 134,06 |

|              |      |       |       |
|--------------|------|-------|-------|
| 4100025020GR | LIYY | 2x2,5 | 36,85 |
| 4100025030GR | LIYY | 3x2,5 | 52,74 |
| 4100025040GR | LIYY | 4x2,5 | 70,18 |
| 4100025050GR | LIYY | 5x2,5 | 86,18 |

## SİNYAL VE KUMANDA KABLOLARI HFFR

| ÜRÜN KODU    | ÜRÜN CİNSİ | KESİT (mm <sup>2</sup> ) | BİRİM FİYAT (₺/m) |
|--------------|------------|--------------------------|-------------------|
| 4120010022GR | LIHH       | 2x1                      | 16,78             |
| 4120010032GR | LIHH       | 3x1                      | 23,85             |
| 4120010042GR | LIHH       | 4x1                      | 31,53             |
| 4120010052GR | LIHH       | 5x1                      | 39,71             |
| 4120010062GR | LIHH       | 6x1                      | 47,68             |
| 4120010072GR | LIHH       | 7x1                      | 53,99             |
| 4120010082GR | LIHH       | 8x1                      | 61,65             |
| 4120010102GR | LIHH       | 10x1                     | 77,64             |
| 4120010122GR | LIHH       | 12x1                     | 92,63             |

|              |      |        |        |
|--------------|------|--------|--------|
| 4120015022GR | LIHH | 2x1,5  | 23,60  |
| 4120015032GR | LIHH | 3x1,5  | 35,35  |
| 4120015042GR | LIHH | 4x1,5  | 45,51  |
| 4120015052GR | LIHH | 5x1,5  | 56,63  |
| 4120015062GR | LIHH | 6x1,5  | 68,88  |
| 4120015072GR | LIHH | 7x1,5  | 78,11  |
| 4120015082GR | LIHH | 8x1,5  | 89,06  |
| 4120015102GR | LIHH | 10x1,5 | 113,90 |
| 4120015122GR | LIHH | 12x1,5 | 136,50 |

|              |      |       |       |
|--------------|------|-------|-------|
| 4120025022GR | LIHH | 2x2,5 | 37,44 |
| 4120025032GR | LIHH | 3x2,5 | 53,93 |
| 4120025042GR | LIHH | 4x2,5 | 71,72 |
| 4120025052GR | LIHH | 5x2,5 | 90,77 |



## SİNYAL VE KUMANDA KABLolari PVC

| ÜRÜN KODU    | ÜRÜN CİNSİ | KESİT (mm <sup>2</sup> ) | BİRİM FİYAT (₺/m) |
|--------------|------------|--------------------------|-------------------|
| 4300002020GR | LIY(St)Y   | 2x0,22+0,22              | 7,85              |
| 4300002030GR | LIY(St)Y   | 3x0,22+0,22              | 9,55              |
| 4300002040GR | LIY(St)Y   | 4x0,22+0,22              | 11,68             |
| 4300002050GR | LIY(St)Y   | 5x0,22+0,22              | 13,59             |
| 4300002060GR | LIY(St)Y   | 6x0,22+0,22              | 16,14             |
| 4300002070GR | LIY(St)Y   | 7x0,22+0,22              | 17,48             |
| 4300002080GR | LIY(St)Y   | 8x0,22+0,22              | 20,04             |
| 4300002100GR | LIY(St)Y   | 10x0,22+0,22             | 24,08             |
| 4300002120GR | LIY(St)Y   | 12x0,22+0,22             | 28,13             |

|              |          |              |       |
|--------------|----------|--------------|-------|
| 4300004020GR | LIY(St)Y | 2x0,34+0,22  | 9,62  |
| 4300004030GR | LIY(St)Y | 3x0,34+0,22  | 12,78 |
| 4300004040GR | LIY(St)Y | 4x0,34+0,22  | 15,62 |
| 4300004050GR | LIY(St)Y | 5x0,34+0,22  | 18,90 |
| 4300004060GR | LIY(St)Y | 6x0,34+0,22  | 22,16 |
| 4300004070GR | LIY(St)Y | 7x0,34+0,22  | 24,82 |
| 4300004080GR | LIY(St)Y | 8x0,34+0,22  | 27,91 |
| 4300004100GR | LIY(St)Y | 10x0,34+0,22 | 34,88 |
| 4300004120GR | LIY(St)Y | 12x0,34+0,22 | 40,73 |

|              |          |             |       |
|--------------|----------|-------------|-------|
| 4300005020GR | LIY(St)Y | 2x0,5+0,22  | 11,99 |
| 4300005030GR | LIY(St)Y | 3x0,5+0,22  | 15,72 |
| 4300005040GR | LIY(St)Y | 4x0,5+0,22  | 20,17 |
| 4300005050GR | LIY(St)Y | 5x0,5+0,22  | 24,17 |
| 4300005060GR | LIY(St)Y | 6x0,5+0,22  | 29,08 |
| 4300005070GR | LIY(St)Y | 7x0,5+0,22  | 31,90 |
| 4300005080GR | LIY(St)Y | 8x0,5+0,22  | 36,96 |
| 4300005100GR | LIY(St)Y | 10x0,5+0,22 | 44,82 |
| 4300005120GR | LIY(St)Y | 12x0,5+0,22 | 51,77 |

|              |          |             |       |
|--------------|----------|-------------|-------|
| 4300008020GR | LIY(St)Y | 2x0,75+0,5  | 18,11 |
| 4300008030GR | LIY(St)Y | 3x0,75+0,5  | 23,23 |
| 4300008040GR | LIY(St)Y | 4x0,75+0,5  | 29,14 |
| 4300008050GR | LIY(St)Y | 5x0,75+0,5  | 36,06 |
| 4300008060GR | LIY(St)Y | 6x0,75+0,5  | 42,17 |
| 4300008070GR | LIY(St)Y | 7x0,75+0,5  | 46,05 |
| 4300008080GR | LIY(St)Y | 8x0,75+0,5  | 53,07 |
| 4300008100GR | LIY(St)Y | 10x0,75+0,5 | 65,89 |
| 4300008120GR | LIY(St)Y | 12x0,75+0,5 | 76,76 |

## SİNYAL VE KUMANDA KABLolari HFFR

| ÜRÜN KODU    | ÜRÜN CİNSİ | KESİT (mm <sup>2</sup> ) | BİRİM FİYAT (₺/m) |
|--------------|------------|--------------------------|-------------------|
| 4320002022GR | LIH(St)H   | 2x0,22+0,22              | 8,14              |
| 4320002032GR | LIH(St)H   | 3x0,22+0,22              | 9,85              |
| 4320002042GR | LIH(St)H   | 4x0,22+0,22              | 11,99             |
| 4320002052GR | LIH(St)H   | 5x0,22+0,22              | 13,80             |
| 4320002062GR | LIH(St)H   | 6x0,22+0,22              | 16,49             |
| 4320002072GR | LIH(St)H   | 7x0,22+0,22              | 17,73             |
| 4320002082GR | LIH(St)H   | 8x0,22+0,22              | 20,58             |
| 4320002102GR | LIH(St)H   | 10x0,22+0,22             | 24,42             |
| 4320002122GR | LIH(St)H   | 12x0,22+0,22             | 28,86             |

|              |          |              |       |
|--------------|----------|--------------|-------|
| 4320004022GR | LIH(St)H | 2x0,34+0,22  | 9,97  |
| 4320004032GR | LIH(St)H | 3x0,34+0,22  | 13,15 |
| 4320004042GR | LIH(St)H | 4x0,34+0,22  | 16,08 |
| 4320004052GR | LIH(St)H | 5x0,34+0,22  | 19,48 |
| 4320004062GR | LIH(St)H | 6x0,34+0,22  | 22,85 |
| 4320004072GR | LIH(St)H | 7x0,34+0,22  | 25,40 |
| 4320004082GR | LIH(St)H | 8x0,34+0,22  | 28,51 |
| 4320004102GR | LIH(St)H | 10x0,34+0,22 | 35,69 |
| 4320004122GR | LIH(St)H | 12x0,34+0,22 | 41,68 |

|              |          |             |       |
|--------------|----------|-------------|-------|
| 4320005022GR | LIH(St)H | 2x0,5+0,22  | 12,36 |
| 4320005032GR | LIH(St)H | 3x0,5+0,22  | 15,96 |
| 4320005042GR | LIH(St)H | 4x0,5+0,22  | 20,69 |
| 4320005052GR | LIH(St)H | 5x0,5+0,22  | 24,51 |
| 4320005062GR | LIH(St)H | 6x0,5+0,22  | 29,79 |
| 4320005072GR | LIH(St)H | 7x0,5+0,22  | 32,32 |
| 4320005082GR | LIH(St)H | 8x0,5+0,22  | 37,84 |
| 4320005102GR | LIH(St)H | 10x0,5+0,22 | 45,83 |
| 4320005122GR | LIH(St)H | 12x0,5+0,22 | 52,41 |

|              |          |             |       |
|--------------|----------|-------------|-------|
| 4320008022GR | LIH(St)H | 2x0,75+0,5  | 18,49 |
| 4320008032GR | LIH(St)H | 3x0,75+0,5  | 23,84 |
| 4320008042GR | LIH(St)H | 4x0,75+0,5  | 29,89 |
| 4320008052GR | LIH(St)H | 5x0,75+0,5  | 36,96 |
| 4320008062GR | LIH(St)H | 6x0,75+0,5  | 43,24 |
| 4320008072GR | LIH(St)H | 7x0,75+0,5  | 46,97 |
| 4320008082GR | LIH(St)H | 8x0,75+0,5  | 54,66 |
| 4320008102GR | LIH(St)H | 10x0,75+0,5 | 66,95 |
| 4320008122GR | LIH(St)H | 12x0,75+0,5 | 78,51 |



## SİNYAL VE KUMANDA KABLOLARI PVC

| ÜRÜN KODU    | ÜRÜN CİNSİ | KESİT (mm <sup>2</sup> ) | BİRİM FİYAT (₺/m) |
|--------------|------------|--------------------------|-------------------|
| 4300010020GR | LIY(S)tY   | 2x1+0,5                  | 21,68             |
| 4300010030GR | LIY(S)tY   | 3x1+0,5                  | 28,50             |
| 4300010040GR | LIY(S)tY   | 4x1+0,5                  | 36,85             |
| 4300010050GR | LIY(S)tY   | 5x1+0,5                  | 44,39             |
| 4300010060GR | LIY(S)tY   | 6x1+0,5                  | 52,78             |
| 4300010070GR | LIY(S)tY   | 7x1+0,5                  | 59,06             |
| 4300010080GR | LIY(S)tY   | 8x1+0,5                  | 66,75             |
| 4300010100GR | LIY(S)tY   | 10x1+0,5                 | 80,80             |
| 4300010120GR | LIY(S)tY   | 12x1+0,5                 | 97,53             |

|              |          |            |        |
|--------------|----------|------------|--------|
| 4300015020GR | LIY(S)tY | 2x1,5+0,5  | 29,07  |
| 4300015030GR | LIY(S)tY | 3x1,5+0,5  | 39,54  |
| 4300015040GR | LIY(S)tY | 4x1,5+0,5  | 50,71  |
| 4300015050GR | LIY(S)tY | 5x1,5+0,5  | 61,73  |
| 4300015060GR | LIY(S)tY | 6x1,5+0,5  | 73,90  |
| 4300015070GR | LIY(S)tY | 7x1,5+0,5  | 83,48  |
| 4300015080GR | LIY(S)tY | 8x1,5+0,5  | 94,58  |
| 4300015100GR | LIY(S)tY | 10x1,5+0,5 | 119,23 |
| 4300015120GR | LIY(S)tY | 12x1,5+0,5 | 138,72 |

|              |          |           |       |
|--------------|----------|-----------|-------|
| 4300025020GR | LIY(S)tY | 2x2,5+0,5 | 42,37 |
| 4300025030GR | LIY(S)tY | 3x2,5+0,5 | 59,23 |
| 4300025040GR | LIY(S)tY | 4x2,5+0,5 | 77,51 |
| 4300025050GR | LIY(S)tY | 5x2,5+0,5 | 95,87 |

## SİNYAL VE KUMANDA KABLOLARI HFFR

| ÜRÜN KODU    | ÜRÜN CİNSİ | KESİT (mm <sup>2</sup> ) | BİRİM FİYAT (₺/m) |
|--------------|------------|--------------------------|-------------------|
| 4320010022GR | LIH(S)tH   | 2x1+0,5                  | 22,20             |
| 4320010032GR | LIH(S)tH   | 3x1+0,5                  | 29,23             |
| 4320010042GR | LIH(S)tH   | 4x1+0,5                  | 37,65             |
| 4320010052GR | LIH(S)tH   | 5x1+0,5                  | 46,01             |
| 4320010062GR | LIH(S)tH   | 6x1+0,5                  | 53,95             |
| 4320010072GR | LIH(S)tH   | 7x1+0,5                  | 60,42             |
| 4320010082GR | LIH(S)tH   | 8x1+0,5                  | 68,05             |
| 4320010102GR | LIH(S)tH   | 10x1+0,5                 | 82,10             |
| 4320010122GR | LIH(S)tH   | 12x1+0,5                 | 99,66             |

|              |          |            |        |
|--------------|----------|------------|--------|
| 4320015022GR | LIH(S)tH | 2x1,5+0,5  | 29,64  |
| 4320015032GR | LIH(S)tH | 3x1,5+0,5  | 40,73  |
| 4320015042GR | LIH(S)tH | 4x1,5+0,5  | 52,04  |
| 4320015052GR | LIH(S)tH | 5x1,5+0,5  | 63,15  |
| 4320015062GR | LIH(S)tH | 6x1,5+0,5  | 75,80  |
| 4320015072GR | LIH(S)tH | 7x1,5+0,5  | 85,35  |
| 4320015082GR | LIH(S)tH | 8x1,5+0,5  | 96,68  |
| 4320015102GR | LIH(S)tH | 10x1,5+0,5 | 121,98 |
| 4320015122GR | LIH(S)tH | 12x1,5+0,5 | 141,68 |

|              |          |           |       |
|--------------|----------|-----------|-------|
| 4320025022GR | LIH(S)tH | 2x2,5+0,5 | 43,50 |
| 4320025032GR | LIH(S)tH | 3x2,5+0,5 | 60,66 |
| 4320025042GR | LIH(S)tH | 4x2,5+0,5 | 79,38 |
| 4320025052GR | LIH(S)tH | 5x2,5+0,5 | 98,32 |



## SİNYAL VE KUMANDA KABLOLARI PVC

| ÜRÜN KODU    | ÜRÜN CİNSİ | KESİT (mm <sup>2</sup> ) | BİRİM FİYAT (₺/m) |
|--------------|------------|--------------------------|-------------------|
| 4200002020GR | LIYCY      | 2x0,22                   | 9,54              |
| 4200002030GR | LIYCY      | 3x0,22                   | 11,63             |
| 4200002040GR | LIYCY      | 4x0,22                   | 13,71             |
| 4200002050GR | LIYCY      | 5x0,22                   | 16,82             |
| 4200002060GR | LIYCY      | 6x0,22                   | 19,00             |
| 4200002070GR | LIYCY      | 7x0,22                   | 21,03             |
| 4200002080GR | LIYCY      | 8x0,22                   | 23,94             |
| 4200002100GR | LIYCY      | 10x0,22                  | 28,75             |
| 4200002120GR | LIYCY      | 12x0,22                  | 33,42             |

|              |       |         |       |
|--------------|-------|---------|-------|
| 4200004020GR | LIYCY | 2x0,34  | 11,86 |
| 4200004030GR | LIYCY | 3x0,34  | 15,61 |
| 4200004040GR | LIYCY | 4x0,34  | 18,62 |
| 4200004050GR | LIYCY | 5x0,34  | 22,93 |
| 4200004060GR | LIYCY | 6x0,34  | 26,22 |
| 4200004070GR | LIYCY | 7x0,34  | 29,04 |
| 4200004080GR | LIYCY | 8x0,34  | 32,55 |
| 4200004100GR | LIYCY | 10x0,34 | 40,55 |
| 4200004120GR | LIYCY | 12x0,34 | 46,73 |

|              |       |        |       |
|--------------|-------|--------|-------|
| 4200005020GR | LIYCY | 2x0,5  | 14,89 |
| 4200005030GR | LIYCY | 3x0,5  | 18,79 |
| 4200005040GR | LIYCY | 4x0,5  | 24,03 |
| 4200005050GR | LIYCY | 5x0,5  | 29,16 |
| 4200005060GR | LIYCY | 6x0,5  | 34,40 |
| 4200005070GR | LIYCY | 7x0,5  | 37,86 |
| 4200005080GR | LIYCY | 8x0,5  | 42,98 |
| 4200005100GR | LIYCY | 10x0,5 | 51,75 |
| 4200005120GR | LIYCY | 12x0,5 | 61,54 |

|              |       |         |       |
|--------------|-------|---------|-------|
| 4200008020GR | LIYCY | 2x0,75  | 19,10 |
| 4200008030GR | LIYCY | 3x0,75  | 24,49 |
| 4200008040GR | LIYCY | 4x0,75  | 31,28 |
| 4200008050GR | LIYCY | 5x0,75  | 37,84 |
| 4200008060GR | LIYCY | 6x0,75  | 45,56 |
| 4200008070GR | LIYCY | 7x0,75  | 50,66 |
| 4200008080GR | LIYCY | 8x0,75  | 56,86 |
| 4200008100GR | LIYCY | 10x0,75 | 69,74 |
| 4200008120GR | LIYCY | 12x0,75 | 81,96 |

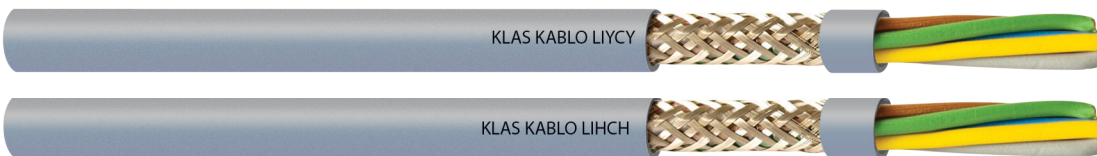
## SİNYAL VE KUMANDA KABLOLARI HFFR

| ÜRÜN KODU    | ÜRÜN CİNSİ | KESİT (mm <sup>2</sup> ) | BİRİM FİYAT (₺/m) |
|--------------|------------|--------------------------|-------------------|
| 4220002022GR | LIHCH      | 2x0,22                   | 9,88              |
| 4220002032GR | LIHCH      | 3x0,22                   | 11,92             |
| 4220002042GR | LIHCH      | 4x0,22                   | 14,03             |
| 4220002052GR | LIHCH      | 5x0,22                   | 17,29             |
| 4220002062GR | LIHCH      | 6x0,22                   | 19,42             |
| 4220002072GR | LIHCH      | 7x0,22                   | 21,57             |
| 4220002082GR | LIHCH      | 8x0,22                   | 24,48             |
| 4220002102GR | LIHCH      | 10x0,22                  | 29,34             |
| 4220002122GR | LIHCH      | 12x0,22                  | 34,28             |

|              |       |         |       |
|--------------|-------|---------|-------|
| 4220004022GR | LIHCH | 2x0,34  | 12,21 |
| 4220004032GR | LIHCH | 3x0,34  | 16,09 |
| 4220004042GR | LIHCH | 4x0,34  | 19,08 |
| 4220004052GR | LIHCH | 5x0,34  | 23,44 |
| 4220004062GR | LIHCH | 6x0,34  | 27,04 |
| 4220004072GR | LIHCH | 7x0,34  | 29,76 |
| 4220004082GR | LIHCH | 8x0,34  | 33,38 |
| 4220004102GR | LIHCH | 10x0,34 | 41,57 |
| 4220004122GR | LIHCH | 12x0,34 | 47,89 |

|              |       |        |       |
|--------------|-------|--------|-------|
| 4220005022GR | LIHCH | 2x0,5  | 15,25 |
| 4220005032GR | LIHCH | 3x0,5  | 19,20 |
| 4220005042GR | LIHCH | 4x0,5  | 24,52 |
| 4220005052GR | LIHCH | 5x0,5  | 30,07 |
| 4220005062GR | LIHCH | 6x0,5  | 35,35 |
| 4220005072GR | LIHCH | 7x0,5  | 38,70 |
| 4220005082GR | LIHCH | 8x0,5  | 43,71 |
| 4220005102GR | LIHCH | 10x0,5 | 52,97 |
| 4220005122GR | LIHCH | 12x0,5 | 62,95 |

|              |       |         |       |
|--------------|-------|---------|-------|
| 4220008022GR | LIHCH | 2x0,75  | 19,56 |
| 4220008032GR | LIHCH | 3x0,75  | 25,04 |
| 4220008042GR | LIHCH | 4x0,75  | 32,04 |
| 4220008052GR | LIHCH | 5x0,75  | 38,80 |
| 4220008062GR | LIHCH | 6x0,75  | 46,70 |
| 4220008072GR | LIHCH | 7x0,75  | 51,71 |
| 4220008082GR | LIHCH | 8x0,75  | 57,67 |
| 4220008102GR | LIHCH | 10x0,75 | 71,38 |
| 4220008122GR | LIHCH | 12x0,75 | 83,89 |





## SİNYAL VE KUMANDA KABLOLARI PVC

| ÜRÜN KODU    | ÜRÜN CİNSİ | KESİT (mm <sup>2</sup> ) | BİRİM FİYAT (₺/m) |
|--------------|------------|--------------------------|-------------------|
| 4200010020GR | LIYCY      | 2x1                      | 22,72             |
| 4200010030GR | LIYCY      | 3x1                      | 29,84             |
| 4200010040GR | LIYCY      | 4x1                      | 38,57             |
| 4200010050GR | LIYCY      | 5x1                      | 47,55             |
| 4200010060GR | LIYCY      | 6x1                      | 56,28             |
| 4200010070GR | LIYCY      | 7x1                      | 62,59             |
| 4200010080GR | LIYCY      | 8x1                      | 71,05             |
| 4200010100GR | LIYCY      | 10x1                     | 86,31             |
| 4200010120GR | LIYCY      | 12x1                     | 103,92            |

|              |       |        |        |
|--------------|-------|--------|--------|
| 4200015020GR | LIYCY | 2x1,5  | 30,96  |
| 4200015030GR | LIYCY | 3x1,5  | 41,77  |
| 4200015040GR | LIYCY | 4x1,5  | 53,73  |
| 4200015050GR | LIYCY | 5x1,5  | 65,59  |
| 4200015060GR | LIYCY | 6x1,5  | 78,61  |
| 4200015070GR | LIYCY | 7x1,5  | 88,10  |
| 4200015080GR | LIYCY | 8x1,5  | 99,29  |
| 4200015100GR | LIYCY | 10x1,5 | 126,03 |
| 4200015120GR | LIYCY | 12x1,5 | 148,91 |

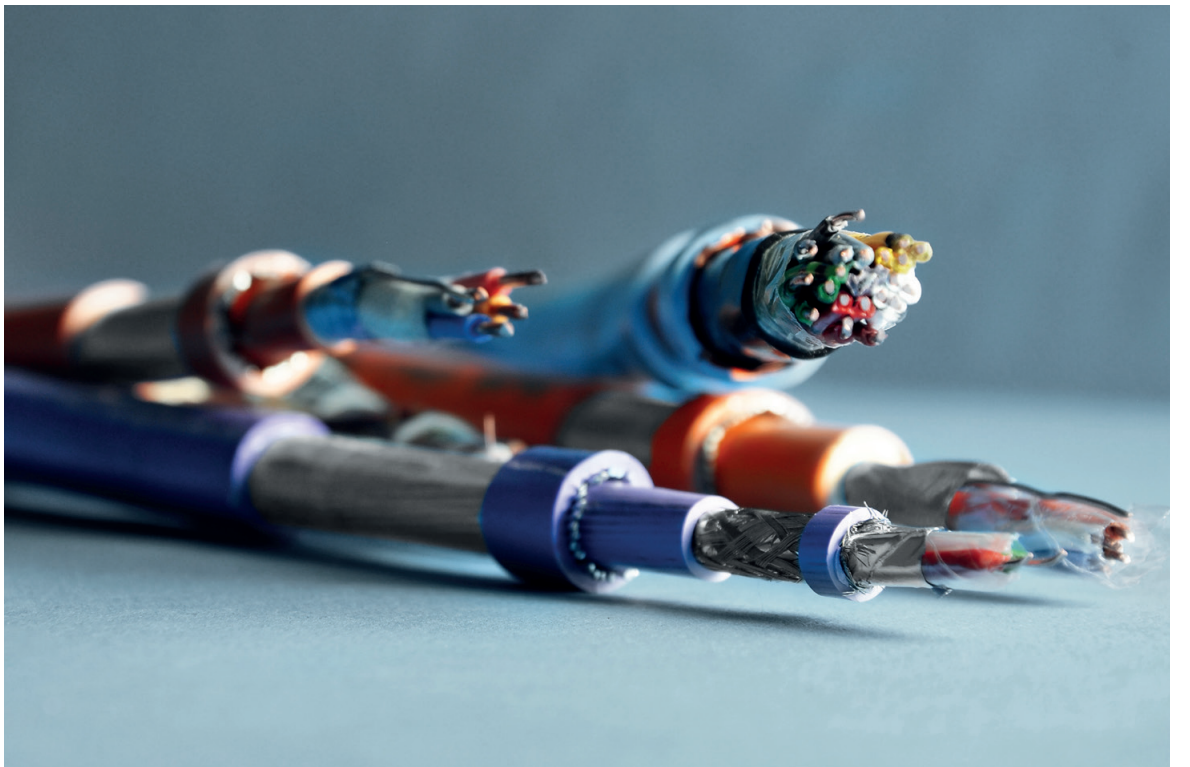
|              |       |       |        |
|--------------|-------|-------|--------|
| 4200025020GR | LIYCY | 2x2,5 | 45,58  |
| 4200025030GR | LIYCY | 3x2,5 | 61,98  |
| 4200025040GR | LIYCY | 4x2,5 | 81,46  |
| 4200025050GR | LIYCY | 5x2,5 | 102,29 |

## SİNYAL VE KUMANDA KABLOLARI HFFR

| ÜRÜN KODU    | ÜRÜN CİNSİ | KESİT (mm <sup>2</sup> ) | BİRİM FİYAT (₺/m) |
|--------------|------------|--------------------------|-------------------|
| 4220010022GR | LIHCH      | 2x1                      | 23,22             |
| 4220010032GR | LIHCH      | 3x1                      | 30,56             |
| 4220010042GR | LIHCH      | 4x1                      | 39,44             |
| 4220010052GR | LIHCH      | 5x1                      | 48,66             |
| 4220010062GR | LIHCH      | 6x1                      | 57,66             |
| 4220010072GR | LIHCH      | 7x1                      | 63,91             |
| 4220010082GR | LIHCH      | 8x1                      | 72,73             |
| 4220010102GR | LIHCH      | 10x1                     | 89,32             |
| 4220010122GR | LIHCH      | 12x1                     | 106,41            |

|              |       |        |        |
|--------------|-------|--------|--------|
| 4220015022GR | LIHCH | 2x1,5  | 31,85  |
| 4220015032GR | LIHCH | 3x1,5  | 42,75  |
| 4220015042GR | LIHCH | 4x1,5  | 54,95  |
| 4220015052GR | LIHCH | 5x1,5  | 66,63  |
| 4220015062GR | LIHCH | 6x1,5  | 80,60  |
| 4220015072GR | LIHCH | 7x1,5  | 90,07  |
| 4220015082GR | LIHCH | 8x1,5  | 101,42 |
| 4220015102GR | LIHCH | 10x1,5 | 129,01 |
| 4220015122GR | LIHCH | 12x1,5 | 152,23 |

|              |       |       |        |
|--------------|-------|-------|--------|
| 4220025022GR | LIHCH | 2x2,5 | 46,74  |
| 4220025032GR | LIHCH | 3x2,5 | 63,60  |
| 4220025042GR | LIHCH | 4x2,5 | 83,22  |
| 4220025052GR | LIHCH | 5x2,5 | 104,85 |



## SİNYAL VE KUMANDA KABLOLARI PVC

| ÜRÜN KODU    | ÜRÜN CİNSİ | KESİT (mm <sup>2</sup> ) | BİRİM FİYAT (₺/m) |
|--------------|------------|--------------------------|-------------------|
| 4400002020GR | LIY(St)CY  | 2x0,22                   | 9,66              |
| 4400002030GR | LIY(St)CY  | 3x0,22                   | 11,81             |
| 4400002040GR | LIY(St)CY  | 4x0,22                   | 13,86             |
| 4400002050GR | LIY(St)CY  | 5x0,22                   | 15,84             |
| 4400002060GR | LIY(St)CY  | 6x0,22                   | 19,06             |
| 4400002070GR | LIY(St)CY  | 7x0,22                   | 20,92             |
| 4400002080GR | LIY(St)CY  | 8x0,22                   | 23,65             |
| 4400002100GR | LIY(St)CY  | 10x0,22                  | 28,84             |
| 4400002120GR | LIY(St)CY  | 12x0,22                  | 33,23             |

|              |           |         |       |
|--------------|-----------|---------|-------|
| 4400004020GR | LIY(St)CY | 2x0,34  | 11,81 |
| 4400004030GR | LIY(St)CY | 3x0,34  | 14,96 |
| 4400004040GR | LIY(St)CY | 4x0,34  | 18,09 |
| 4400004050GR | LIY(St)CY | 5x0,34  | 22,19 |
| 4400004060GR | LIY(St)CY | 6x0,34  | 25,49 |
| 4400004070GR | LIY(St)CY | 7x0,34  | 28,16 |
| 4400004080GR | LIY(St)CY | 8x0,34  | 32,34 |
| 4400004100GR | LIY(St)CY | 10x0,34 | 40,27 |
| 4400004120GR | LIY(St)CY | 12x0,34 | 46,81 |

|              |           |        |       |
|--------------|-----------|--------|-------|
| 4400005020GR | LIY(St)CY | 2x0,5  | 15,14 |
| 4400005030GR | LIY(St)CY | 3x0,5  | 19,50 |
| 4400005040GR | LIY(St)CY | 4x0,5  | 23,56 |
| 4400005050GR | LIY(St)CY | 5x0,5  | 29,24 |
| 4400005060GR | LIY(St)CY | 6x0,5  | 34,37 |
| 4400005070GR | LIY(St)CY | 7x0,5  | 37,36 |
| 4400005080GR | LIY(St)CY | 8x0,5  | 43,05 |
| 4400005100GR | LIY(St)CY | 10x0,5 | 51,65 |
| 4400005120GR | LIY(St)CY | 12x0,5 | 61,34 |

|              |           |         |       |
|--------------|-----------|---------|-------|
| 4400008020GR | LIY(St)CY | 2x0,75  | 18,52 |
| 4400008030GR | LIY(St)CY | 3x0,75  | 23,80 |
| 4400008040GR | LIY(St)CY | 4x0,75  | 30,59 |
| 4400008050GR | LIY(St)CY | 5x0,75  | 38,14 |
| 4400008060GR | LIY(St)CY | 6x0,75  | 45,17 |
| 4400008070GR | LIY(St)CY | 7x0,75  | 48,52 |
| 4400008080GR | LIY(St)CY | 8x0,75  | 56,61 |
| 4400008100GR | LIY(St)CY | 10x0,75 | 68,01 |
| 4400008120GR | LIY(St)CY | 12x0,75 | 83,01 |

## SİNYAL VE KUMANDA KABLOLARI HFFR

| ÜRÜN KODU    | ÜRÜN CİNSİ | KESİT (mm <sup>2</sup> ) | BİRİM FİYAT (₺/m) |
|--------------|------------|--------------------------|-------------------|
| 4420002022GR | LIH(St)CH  | 2x0,22                   | 9,98              |
| 4420002032GR | LIH(St)CH  | 3x0,22                   | 12,17             |
| 4420002042GR | LIH(St)CH  | 4x0,22                   | 14,17             |
| 4420002052GR | LIH(St)CH  | 5x0,22                   | 16,16             |
| 4420002062GR | LIH(St)CH  | 6x0,22                   | 19,88             |
| 4420002072GR | LIH(St)CH  | 7x0,22                   | 21,39             |
| 4420002082GR | LIH(St)CH  | 8x0,22                   | 24,23             |
| 4420002102GR | LIH(St)CH  | 10x0,22                  | 29,60             |
| 4420002122GR | LIH(St)CH  | 12x0,22                  | 34,11             |

|              |           |         |       |
|--------------|-----------|---------|-------|
| 4420004022GR | LIH(St)CH | 2x0,34  | 12,21 |
| 4420004032GR | LIH(St)CH | 3x0,34  | 15,45 |
| 4420004042GR | LIH(St)CH | 4x0,34  | 18,60 |
| 4420004052GR | LIH(St)CH | 5x0,34  | 22,88 |
| 4420004062GR | LIH(St)CH | 6x0,34  | 26,32 |
| 4420004072GR | LIH(St)CH | 7x0,34  | 28,89 |
| 4420004082GR | LIH(St)CH | 8x0,34  | 33,18 |
| 4420004102GR | LIH(St)CH | 10x0,34 | 41,37 |
| 4420004122GR | LIH(St)CH | 12x0,34 | 48,04 |

|              |           |        |       |
|--------------|-----------|--------|-------|
| 4420005022GR | LIH(St)CH | 2x0,5  | 15,53 |
| 4420005032GR | LIH(St)CH | 3x0,5  | 19,99 |
| 4420005042GR | LIH(St)CH | 4x0,5  | 23,99 |
| 4420005052GR | LIH(St)CH | 5x0,5  | 30,10 |
| 4420005062GR | LIH(St)CH | 6x0,5  | 35,36 |
| 4420005072GR | LIH(St)CH | 7x0,5  | 37,91 |
| 4420005082GR | LIH(St)CH | 8x0,5  | 44,11 |
| 4420005102GR | LIH(St)CH | 10x0,5 | 52,73 |
| 4420005122GR | LIH(St)CH | 12x0,5 | 62,77 |

|              |           |         |       |
|--------------|-----------|---------|-------|
| 4420008022GR | LIH(St)CH | 2x0,75  | 19,07 |
| 4420008032GR | LIH(St)CH | 3x0,75  | 24,38 |
| 4420008042GR | LIH(St)CH | 4x0,75  | 31,39 |
| 4420008052GR | LIH(St)CH | 5x0,75  | 39,11 |
| 4420008062GR | LIH(St)CH | 6x0,75  | 46,30 |
| 4420008072GR | LIH(St)CH | 7x0,75  | 49,31 |
| 4420008082GR | LIH(St)CH | 8x0,75  | 57,86 |
| 4420008102GR | LIH(St)CH | 10x0,75 | 69,10 |
| 4420008122GR | LIH(St)CH | 12x0,75 | 84,96 |



## SİNYAL VE KUMANDA KABLOLARI PVC

| ÜRÜN KODU    | ÜRÜN CİNSİ | KESİT (mm <sup>2</sup> ) | BİRİM FİYAT (₺/m) |
|--------------|------------|--------------------------|-------------------|
| 4400010020GR | LIY(St)CY  | 2x1                      | 22,16             |
| 4400010030GR | LIY(St)CY  | 3x1                      | 29,36             |
| 4400010040GR | LIY(St)CY  | 4x1                      | 37,95             |
| 4400010050GR | LIY(St)CY  | 5x1                      | 46,05             |
| 4400010060GR | LIY(St)CY  | 6x1                      | 55,63             |
| 4400010070GR | LIY(St)CY  | 7x1                      | 61,68             |
| 4400010080GR | LIY(St)CY  | 8x1                      | 70,68             |
| 4400010100GR | LIY(St)CY  | 10x1                     | 87,58             |
| 4400010120GR | LIY(St)CY  | 12x1                     | 103,91            |

|              |           |        |        |
|--------------|-----------|--------|--------|
| 4400015020GR | LIY(St)CY | 2x1,5  | 30,64  |
| 4400015030GR | LIY(St)CY | 3x1,5  | 41,08  |
| 4400015040GR | LIY(St)CY | 4x1,5  | 53,44  |
| 4400015050GR | LIY(St)CY | 5x1,5  | 65,80  |
| 4400015060GR | LIY(St)CY | 6x1,5  | 78,42  |
| 4400015070GR | LIY(St)CY | 7x1,5  | 87,52  |
| 4400015080GR | LIY(St)CY | 8x1,5  | 100,10 |
| 4400015100GR | LIY(St)CY | 10x1,5 | 125,01 |
| 4400015120GR | LIY(St)CY | 12x1,5 | 146,43 |

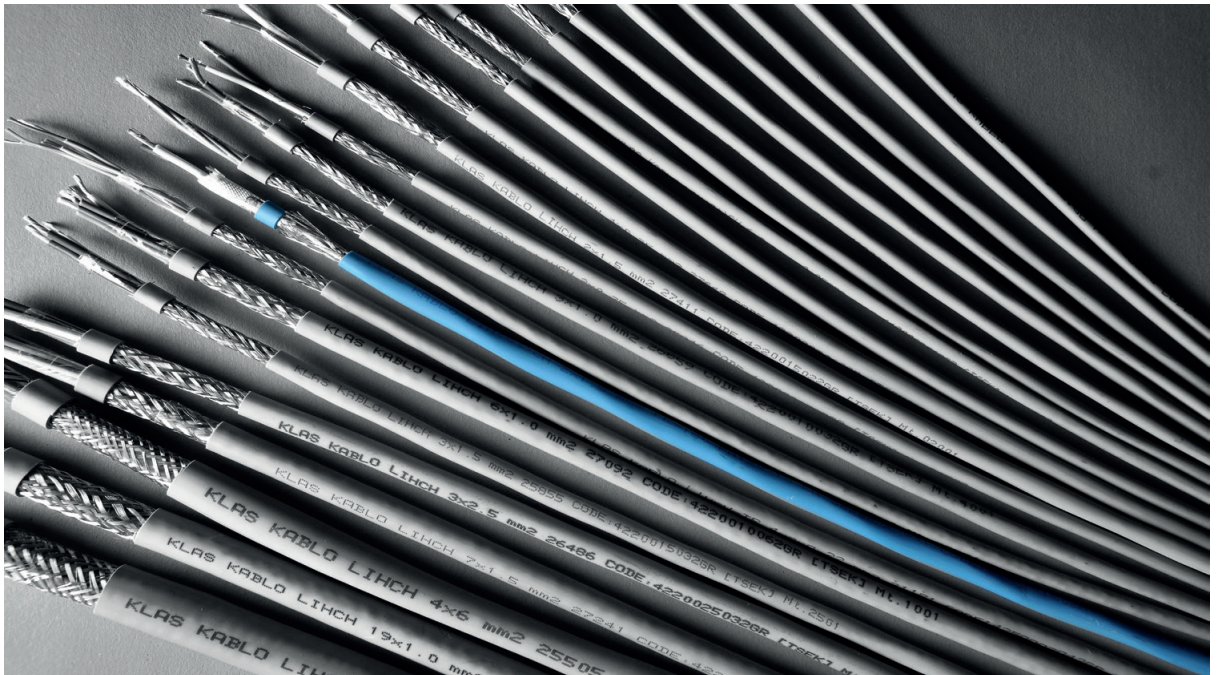
|              |           |       |       |
|--------------|-----------|-------|-------|
| 4400025020GR | LIY(St)CY | 2x2,5 | 45,61 |
| 4400025030GR | LIY(St)CY | 3x2,5 | 62,54 |
| 4400025040GR | LIY(St)CY | 4x2,5 | 79,67 |
| 4400025050GR | LIY(St)CY | 5x2,5 | 97,29 |

## SİNYAL VE KUMANDA KABLOLARI HFFR

| ÜRÜN KODU    | ÜRÜN CİNSİ | KESİT (mm <sup>2</sup> ) | BİRİM FİYAT (₺/m) |
|--------------|------------|--------------------------|-------------------|
| 4420010022GR | LIH(St)CH  | 2x1                      | 22,67             |
| 4420010032GR | LIH(St)CH  | 3x1                      | 30,07             |
| 4420010042GR | LIH(St)CH  | 4x1                      | 38,85             |
| 4420010052GR | LIH(St)CH  | 5x1                      | 46,88             |
| 4420010062GR | LIH(St)CH  | 6x1                      | 57,01             |
| 4420010072GR | LIH(St)CH  | 7x1                      | 63,03             |
| 4420010082GR | LIH(St)CH  | 8x1                      | 72,12             |
| 4420010102GR | LIH(St)CH  | 10x1                     | 89,10             |
| 4420010122GR | LIH(St)CH  | 12x1                     | 106,42            |

|              |           |        |        |
|--------------|-----------|--------|--------|
| 4420015022GR | LIH(St)CH | 2x1,5  | 31,43  |
| 4420015032GR | LIH(St)CH | 3x1,5  | 42,04  |
| 4420015042GR | LIH(St)CH | 4x1,5  | 54,58  |
| 4420015052GR | LIH(St)CH | 5x1,5  | 67,41  |
| 4420015062GR | LIH(St)CH | 6x1,5  | 80,34  |
| 4420015072GR | LIH(St)CH | 7x1,5  | 89,59  |
| 4420015082GR | LIH(St)CH | 8x1,5  | 102,38 |
| 4420015102GR | LIH(St)CH | 10x1,5 | 127,10 |
| 4420015122GR | LIH(St)CH | 12x1,5 | 149,87 |

|              |           |       |        |
|--------------|-----------|-------|--------|
| 4420025022GR | LIH(St)CH | 2x2,5 | 46,77  |
| 4420025032GR | LIH(St)CH | 3x2,5 | 64,10  |
| 4420025042GR | LIH(St)CH | 4x2,5 | 82,60  |
| 4420025052GR | LIH(St)CH | 5x2,5 | 101,44 |



## KONTROL VE KUMANDA KABLolari PVC

| ÜRÜN KODU   | ÜRÜN CİNSİ | KESİT (mm <sup>2</sup> ) | BİRİM FİYAT (₺/m) |
|-------------|------------|--------------------------|-------------------|
| 450005020GR | YSLY-OZ    | 2x0,5                    | 10,46             |
| 450005030GR | YSLY-JZ    | 3G0,5                    | 14,09             |
| 450005040GR | YSLY-JZ    | 4G0,5                    | 18,34             |
| 450005050GR | YSLY-JZ    | 5G0,5                    | 22,72             |
| 450005060GR | YSLY-JZ    | 6G0,5                    | 26,95             |
| 450005070GR | YSLY-JZ    | 7G0,5                    | 30,34             |
| 450005080GR | YSLY-JZ    | 8G0,5                    | 35,76             |
| 450005100GR | YSLY-JZ    | 10G0,5                   | 43,81             |
| 450005120GR | YSLY-JZ    | 12G0,5                   | 58,11             |

|             |         |         |       |
|-------------|---------|---------|-------|
| 450008020GR | YSLY-OZ | 2x0,75  | 14,66 |
| 450008030GR | YSLY-JZ | 3G0,75  | 19,88 |
| 450008040GR | YSLY-JZ | 4G0,75  | 25,89 |
| 450008050GR | YSLY-JZ | 5G0,75  | 30,64 |
| 450008060GR | YSLY-JZ | 6G0,75  | 38,43 |
| 450008070GR | YSLY-JZ | 7G0,75  | 44,43 |
| 450008080GR | YSLY-JZ | 8G0,75  | 51,58 |
| 450008100GR | YSLY-JZ | 10G0,75 | 63,58 |
| 450008120GR | YSLY-JZ | 12G0,75 | 74,58 |

|              |         |      |       |
|--------------|---------|------|-------|
| 4500010020GR | YSLY-OZ | 2x1  | 19,11 |
| 4500010030GR | YSLY-JZ | 3G1  | 25,57 |
| 4500010040GR | YSLY-JZ | 4G1  | 33,12 |
| 4500010050GR | YSLY-JZ | 5G1  | 41,18 |
| 4500010060GR | YSLY-JZ | 6G1  | 49,09 |
| 4500010070GR | YSLY-JZ | 7G1  | 55,63 |
| 4500010080GR | YSLY-JZ | 8G1  | 66,15 |
| 4500010100GR | YSLY-JZ | 10G1 | 79,42 |
| 4500010120GR | YSLY-JZ | 12G1 | 94,94 |

|              |         |        |        |
|--------------|---------|--------|--------|
| 4500015020GR | YSLY-OZ | 2x1,5  | 25,90  |
| 4500015030GR | YSLY-JZ | 3G1,5  | 35,39  |
| 4500015040GR | YSLY-JZ | 4G1,5  | 45,85  |
| 4500015050GR | YSLY-JZ | 5G1,5  | 56,90  |
| 4500015060GR | YSLY-JZ | 6G1,5  | 68,44  |
| 4500015070GR | YSLY-JZ | 7G1,5  | 80,35  |
| 4500015080GR | YSLY-JZ | 8G1,5  | 91,83  |
| 4500015100GR | YSLY-JZ | 10G1,5 | 113,58 |
| 4500015120GR | YSLY-JZ | 12G1,5 | 133,43 |

|              |         |       |       |
|--------------|---------|-------|-------|
| 4500025020GR | YSLY-OZ | 2x2,5 | 41,39 |
| 4500025030GR | YSLY-JZ | 3G2,5 | 57,29 |
| 4500025040GR | YSLY-JZ | 4G2,5 | 75,40 |
| 4500025050GR | YSLY-JZ | 5G2,5 | 93,86 |

## EKRANLI KONTROL VE KUMANDA KABLolari PVC

| ÜRÜN KODU    | ÜRÜN CİNSİ | KESİT (mm <sup>2</sup> ) | BİRİM FİYAT (₺/m) |
|--------------|------------|--------------------------|-------------------|
| 4560005020GR | YSLYCY-OZ  | 2x0,5                    | 20,07             |
| 4560005030GR | YSLYCY-JZ  | 3G0,5                    | 24,71             |
| 4560005040GR | YSLYCY-JZ  | 4G0,5                    | 29,61             |
| 4560005050GR | YSLYCY-JZ  | 5G0,5                    | 36,39             |
| 4560005060GR | YSLYCY-JZ  | 6G0,5                    | 42,10             |
| 4560005070GR | YSLYCY-JZ  | 7G0,5                    | 45,86             |
| 4560005080GR | YSLYCY-JZ  | 8G0,5                    | 55,44             |
| 4560005100GR | YSLYCY-JZ  | 10G0,5                   | 69,51             |
| 4560005120GR | YSLYCY-JZ  | 12G0,5                   | 77,42             |

|              |           |         |       |
|--------------|-----------|---------|-------|
| 4560008020GR | YSLYCY-OZ | 2x0,75  | 24,76 |
| 4560008030GR | YSLYCY-JZ | 3G0,75  | 35,02 |
| 4560008040GR | YSLYCY-JZ | 4G0,75  | 39,06 |
| 4560008050GR | YSLYCY-JZ | 5G0,75  | 46,52 |
| 4560008060GR | YSLYCY-JZ | 6G0,75  | 52,80 |
| 4560008070GR | YSLYCY-JZ | 7G0,75  | 60,11 |
| 4560008080GR | YSLYCY-JZ | 8G0,75  | 67,01 |
| 4560008100GR | YSLYCY-JZ | 10G0,75 | 81,47 |
| 4560008120GR | YSLYCY-JZ | 12G0,75 | 95,92 |

|              |           |      |        |
|--------------|-----------|------|--------|
| 4560010020GR | YSLYCY-OZ | 2x1  | 31,04  |
| 4560010030GR | YSLYCY-JZ | 3G1  | 38,33  |
| 4560010040GR | YSLYCY-JZ | 4G1  | 47,29  |
| 4560010050GR | YSLYCY-JZ | 5G1  | 56,37  |
| 4560010060GR | YSLYCY-JZ | 6G1  | 65,34  |
| 4560010070GR | YSLYCY-JZ | 7G1  | 71,67  |
| 4560010080GR | YSLYCY-JZ | 8G1  | 86,03  |
| 4560010100GR | YSLYCY-JZ | 10G1 | 104,93 |
| 4560010120GR | YSLYCY-JZ | 12G1 | 118,04 |

|              |           |        |        |
|--------------|-----------|--------|--------|
| 4560015020GR | YSLYCY-OZ | 2x1,5  | 38,44  |
| 4560015030GR | YSLYCY-JZ | 3G1,5  | 48,74  |
| 4560015040GR | YSLYCY-JZ | 4G1,5  | 60,81  |
| 4560015050GR | YSLYCY-JZ | 5G1,5  | 73,33  |
| 4560015060GR | YSLYCY-JZ | 6G1,5  | 88,11  |
| 4560015070GR | YSLYCY-JZ | 7G1,5  | 97,43  |
| 4560015080GR | YSLYCY-JZ | 8G1,5  | 108,84 |
| 4560015100GR | YSLYCY-JZ | 10G1,5 | 139,37 |
| 4560015120GR | YSLYCY-JZ | 12G1,5 | 157,98 |

|              |           |       |        |
|--------------|-----------|-------|--------|
| 4560025020GR | YSLYCY-OZ | 2x2,5 | 56,42  |
| 4560025030GR | YSLYCY-JZ | 3G2,5 | 74,82  |
| 4560025040GR | YSLYCY-JZ | 4G2,5 | 94,15  |
| 4560025050GR | YSLYCY-JZ | 5G2,5 | 116,26 |

## YAĞA DAYANIKLI KONTROL VE KUMANDA KABLOLARI PVC

| ÜRÜN KODU    | ÜRÜN CİNSİ  | KESİT (mm <sup>2</sup> ) | BİRİM FİYAT (₺/m) |
|--------------|-------------|--------------------------|-------------------|
| 4600008020GR | (N)YSLYÖ-OZ | 2x0,75                   | 19,21             |
| 4600008030GR | (N)YSLYÖ-JZ | 3G0,75                   | 23,98             |
| 4600008040GR | (N)YSLYÖ-JZ | 4G0,75                   | 31,08             |
| 4600008050GR | (N)YSLYÖ-JZ | 5G0,75                   | 37,57             |
| 4600008060GR | (N)YSLYÖ-JZ | 6G0,75                   | 44,59             |
| 4600008070GR | (N)YSLYÖ-JZ | 7G0,75                   | 57,20             |
| 4600008080GR | (N)YSLYÖ-JZ | 8G0,75                   | 60,19             |
| 4600008100GR | (N)YSLYÖ-JZ | 10G0,75                  | 72,90             |
| 4600008120GR | (N)YSLYÖ-JZ | 12G0,75                  | 85,92             |

|              |             |      |        |
|--------------|-------------|------|--------|
| 4600010020GR | (N)YSLYÖ-OZ | 2x1  | 23,89  |
| 4600010030GR | (N)YSLYÖ-JZ | 3G1  | 31,08  |
| 4600010040GR | (N)YSLYÖ-JZ | 4G1  | 39,17  |
| 4600010050GR | (N)YSLYÖ-JZ | 5G1  | 48,66  |
| 4600010060GR | (N)YSLYÖ-JZ | 6G1  | 61,02  |
| 4600010070GR | (N)YSLYÖ-JZ | 7G1  | 71,36  |
| 4600010080GR | (N)YSLYÖ-JZ | 8G1  | 79,36  |
| 4600010100GR | (N)YSLYÖ-JZ | 10G1 | 91,84  |
| 4600010120GR | (N)YSLYÖ-JZ | 12G1 | 114,10 |

|              |             |        |        |
|--------------|-------------|--------|--------|
| 4600015020GR | (N)YSLYÖ-OZ | 2x1,5  | 33,81  |
| 4600015030GR | (N)YSLYÖ-JZ | 3G1,5  | 43,22  |
| 4600015040GR | (N)YSLYÖ-JZ | 4G1,5  | 54,71  |
| 4600015050GR | (N)YSLYÖ-JZ | 5G1,5  | 66,18  |
| 4600015060GR | (N)YSLYÖ-JZ | 6G1,5  | 82,46  |
| 4600015070GR | (N)YSLYÖ-JZ | 7G1,5  | 92,81  |
| 4600015080GR | (N)YSLYÖ-JZ | 8G1,5  | 110,60 |
| 4600015100GR | (N)YSLYÖ-JZ | 10G1,5 | 135,98 |
| 4600015120GR | (N)YSLYÖ-JZ | 12G1,5 | 154,09 |

|              |             |       |        |
|--------------|-------------|-------|--------|
| 4600025020GR | (N)YSLYÖ-OZ | 2x2,5 | 49,65  |
| 4600025030GR | (N)YSLYÖ-JZ | 3G2,5 | 68,43  |
| 4600025040GR | (N)YSLYÖ-JZ | 4G2,5 | 89,09  |
| 4600025050GR | (N)YSLYÖ-JZ | 5G2,5 | 107,77 |

## YAĞA DAYANIKLI EKRANLI KONTROL VE KUMANDA KABLOLARI PVC

| ÜRÜN KODU    | ÜRÜN CİNSİ    | KESİT (mm <sup>2</sup> ) | BİRİM FİYAT (₺/m) |
|--------------|---------------|--------------------------|-------------------|
| 4660008020GR | (N)YSLYCYÖ-OZ | 2x0,75                   | 34,09             |
| 4660008030GR | (N)YSLYCYÖ-JZ | 3G0,75                   | 40,68             |
| 4660008040GR | (N)YSLYCYÖ-JZ | 4G0,75                   | 49,54             |
| 4660008050GR | (N)YSLYCYÖ-JZ | 5G0,75                   | 58,14             |
| 4660008060GR | (N)YSLYCYÖ-JZ | 6G0,75                   | 67,88             |
| 4660008070GR | (N)YSLYCYÖ-JZ | 7G0,75                   | 74,39             |
| 4660008080GR | (N)YSLYCYÖ-JZ | 8G0,75                   | 90,01             |
| 4660008100GR | (N)YSLYCYÖ-JZ | 10G0,75                  | 105,02            |
| 4660008120GR | (N)YSLYCYÖ-JZ | 12G0,75                  | 118,83            |

|              |               |      |        |
|--------------|---------------|------|--------|
| 4660010020GR | (N)YSLYCYÖ-OZ | 2x1  | 39,41  |
| 4660010030GR | (N)YSLYCYÖ-JZ | 3G1  | 48,89  |
| 4660010040GR | (N)YSLYCYÖ-JZ | 4G1  | 58,36  |
| 4660010050GR | (N)YSLYCYÖ-JZ | 5G1  | 70,13  |
| 4660010060GR | (N)YSLYCYÖ-JZ | 6G1  | 81,05  |
| 4660010070GR | (N)YSLYCYÖ-JZ | 7G1  | 90,90  |
| 4660010080GR | (N)YSLYCYÖ-JZ | 8G1  | 101,71 |
| 4660010100GR | (N)YSLYCYÖ-JZ | 10G1 | 126,63 |
| 4660010120GR | (N)YSLYCYÖ-JZ | 12G1 | 144,88 |

|              |               |        |        |
|--------------|---------------|--------|--------|
| 4660015020GR | (N)YSLYCYÖ-OZ | 2x1,5  | 50,46  |
| 4660015030GR | (N)YSLYCYÖ-JZ | 3G1,5  | 62,31  |
| 4660015040GR | (N)YSLYCYÖ-JZ | 4G1,5  | 77,23  |
| 4660015050GR | (N)YSLYCYÖ-JZ | 5G1,5  | 94,75  |
| 4660015060GR | (N)YSLYCYÖ-JZ | 6G1,5  | 109,03 |
| 4660015070GR | (N)YSLYCYÖ-JZ | 7G1,5  | 120,74 |
| 4660015080GR | (N)YSLYCYÖ-JZ | 8G1,5  | 135,07 |
| 4660015100GR | (N)YSLYCYÖ-JZ | 10G1,5 | 169,23 |
| 4660015120GR | (N)YSLYCYÖ-JZ | 12G1,5 | 194,53 |

|              |               |       |        |
|--------------|---------------|-------|--------|
| 4660025020GR | (N)YSLYCYÖ-OZ | 2x2,5 | 71,10  |
| 4660025030GR | (N)YSLYCYÖ-JZ | 3G2,5 | 90,09  |
| 4660025040GR | (N)YSLYCYÖ-JZ | 4G2,5 | 113,64 |
| 4660025050GR | (N)YSLYCYÖ-JZ | 5G2,5 | 137,82 |



## YASSI DALGIÇ POMPA ASANSÖR - VİNÇ KABLARI PVC

| ÜRÜN KODU    | ÜRÜN CİNSİ | KESİT (mm <sup>2</sup> ) | BİRİM FİYAT (₺/m) |
|--------------|------------|--------------------------|-------------------|
| 7273008120GR | H05VVH6-F  | 12x0,75                  | 100,62            |
| 7273008160GR | H05VVH6-F  | 16x0,75                  | 131,32            |
| 7273008200GR | H05VVH6-F  | 20x0,75                  | 165,45            |
| 7273008240GR | H05VVH6-F  | 24x0,75                  | 194,56            |
| 7270015030GR | H07VVH6-F  | 3x1,5                    | 44,17             |
| 7270015040GR | H07VVH6-F  | 4x1,5                    | 58,54             |
| 7270015050GR | H07VVH6-F  | 5x1,5                    | 72,33             |
| 7270015080GR | H07VVH6-F  | 8x1,5                    | 113,34            |
| 7270015100GR | H07VVH6-F  | 10x1,5                   | 141,54            |
| 7270015120GR | H07VVH6-F  | 12x1,5                   | 176,89            |
| 7270015160GR | H07VVH6-F  | 16x1,5                   | 225,32            |
| 7270015240GR | H07VVH6-F  | 24x1,5                   | 333,74            |
| 7270025030GR | H07VVH6-F  | 3x2,5                    | 67,97             |
| 7270025040GR | H07VVH6-F  | 4x2,5                    | 89,90             |
| 7270025050GR | H07VVH6-F  | 5x2,5                    | 112,85            |
| 7270025080GR | H07VVH6-F  | 8x2,5                    | 175,24            |
| 7270025100GR | H07VVH6-F  | 10x2,5                   | 219,37            |
| 7270025120GR | H07VVH6-F  | 12x2,5                   | 267,52            |
| 7270025160GR | H07VVH6-F  | 16x2,5                   | 355,77            |
| 7270025240GR | H07VVH6-F  | 24x2,5                   | 520,64            |

## YASSI DALGIÇ POMPA ASANSÖR - VİNÇ KABLARI PVC

| ÜRÜN KODU    | ÜRÜN CİNSİ | KESİT (mm <sup>2</sup> ) | BİRİM FİYAT (₺/m) |
|--------------|------------|--------------------------|-------------------|
| 7270040030GR | H07VVH6-F  | 3x4                      | 99,45             |
| 7270040040GR | H07VVH6-F  | 4x4                      | 128,15            |
| 7270060030GR | H07VVH6-F  | 3x6                      | 139,63            |
| 7270060040GR | H07VVH6-F  | 4x6                      | 182,90            |
| 7270100030GR | H07VVH6-F  | 3x10                     | 245,25            |
| 7270100040GR | H07VVH6-F  | 4x10                     | 324,60            |
| 7270160030GR | H07VVH6-F  | 3x16                     | 370,36            |
| 7270160040GR | H07VVH6-F  | 4x16                     | 494,57            |
| 7270250030GR | H07VVH6-F  | 3x25                     | 541,68            |
| 7270250040GR | H07VVH6-F  | 4x25                     | 728,91            |
| 7273028280SH | H05VVH6-F  | 28G0,75+2x(2x0,38)       | 270,05            |

## PENDANT KABLORAR PVC

| ÜRÜN KODU    | ÜRÜN CİNSİ | KESİT (mm <sup>2</sup> ) | BİRİM FİYAT (₺/m) |
|--------------|------------|--------------------------|-------------------|
| 4970015120SR | PENDANT    | 12x1,5                   | 208,26            |
| 4970015160SR | PENDANT    | 16x1,5                   | 265,94            |



## SES VE GÖRÜNTÜ KABLARI

| ÜRÜN KODU    | ÜRÜN CİNSİ    | KESİT (mm <sup>2</sup> ) | BİRİM FİYAT (₺/m) |
|--------------|---------------|--------------------------|-------------------|
| 2701005000SH | RGB-HV5       | 5 COAX                   | 54,99             |
| 2701134140SH | RGB-3/4D      | 3 COAX+4x0,14            | 47,74             |
| 2701034140SH | RGB-3C4D+SHLD | 3 COAX+4x0,14            | 57,90             |
| 2701138140SH | RGB-3/8D      | 3 COAX+8x0,14            | 53,17             |
| 2701038140SH | RGB-3C8D+SHLD | 3 COAX+8x0,14            | 63,31             |

## MİKROFON VE WALKMAN KABLARI

| ÜRÜN KODU    | ÜRÜN CİNSİ                | KESİT (mm <sup>2</sup> ) | BİRİM FİYAT (₺/m) |
|--------------|---------------------------|--------------------------|-------------------|
| 2730020110SH | MIC UBL 12 BALANSSIZ      | 1x0,22                   | 15,48             |
| 2730020200SH | MIC BL 22 BALANSLI        | 2x0,22                   | 20,97             |
| 2731020200SH | MIC DUB 22 BALANSSIZ      | 2x0,22                   | 14,52             |
| 2731020201SH | MIC DUB 22 DUAL BALANSSIZ | 2x0,22                   | 16,35             |

## MULTİCORE SES KABLARI

| ÜRÜN KODU    | ÜRÜN CİNSİ | KESİT (mm <sup>2</sup> ) | BİRİM FİYAT (₺/m) |
|--------------|------------|--------------------------|-------------------|
| 2720002020SH | AMC 2C22   | 2x2x0,22                 | 30,84             |
| 2720002040SH | AMC 4C22   | 4x2x0,22                 | 48,19             |
| 2720002060SH | AMC 6C22   | 6x2x0,22                 | 68,80             |
| 2720002080SH | AMC 8C22   | 8x2x0,22                 | 84,19             |
| 2720002100SH | AMC 10C22  | 10x2x0,22                | 101,59            |
| 2720002120SH | AMC 12C22  | 12x2x0,22                | 118,32            |
| 2720002160SH | AMC 16C22  | 16x2x0,22                | 152,28            |
| 2720002240SH | AMC 24C22  | 24x2x0,22                | 221,11            |
| 2720002320SH | AMC 32C22  | 32x2x0,22                | 284,61            |
| 2720002480SH | AMC 48C22  | 48x2x0,22                | 460,95            |

## HOPARLÖR KABLARI

| ÜRÜN KODU    | ÜRÜN CİNSİ | KESİT (mm <sup>2</sup> ) | BİRİM FİYAT (₺/m) |
|--------------|------------|--------------------------|-------------------|
| 2711015020SH | K-SPK      | 2x1,5                    | 37,61             |
| 2711025020SH | K-SPK      | 2x2,5                    | 57,28             |
| 2711040020SH | K-SPK      | 2x4                      | 86,43             |
| 2711060020SH | K-SPK      | 2x6                      | 122,99            |



## AG ENERJİ VE TESİSAT KABLARI HFFR

| ÜRÜN KODU    | ÜRÜN CİNSİ | KESİT (mm <sup>2</sup> ) | BİRİM FİYAT (₺/m) |
|--------------|------------|--------------------------|-------------------|
| 7050400052SH | H05Z1-K    | 1x0,5                    | 3,94              |
| 7050080102SH | H05Z1-K    | 1x0,75                   | 5,98              |
| 7050400102SH | H05Z1-K    | 1x1                      | 7,56              |
| 7050500152SH | H07Z1-K    | 1x1,5                    | 10,79             |
| 7050500252SH | H07Z1-K    | 1x2,5                    | 17,44             |
| 7050500402SH | H07Z1-K    | 1x4                      | 27,65             |
| 7050500602SH | H07Z1-K    | 1x6                      | 39,97             |

## AG ENERJİ VE TESİSAT KABLARI HFFR

| ÜRÜN KODU    | ÜRÜN CİNSİ | KESİT (mm <sup>2</sup> ) | BİRİM FİYAT (₺/m) |
|--------------|------------|--------------------------|-------------------|
| 7054210802BZ | 052XZ1-F   | 2x0,75                   | 18,45             |
| 7054210803BZ | 052XZ1-F   | 3G0,75                   | 23,97             |
| 7054210804BZ | 052XZ1-F   | 4G0,75                   | 30,05             |
| 7054210805BZ | 052XZ1-F   | 5G0,75                   | 36,36             |
| 7054210102BZ | 052XZ1-F   | 2x1                      | 22,75             |
| 7054210103BZ | 052XZ1-F   | 3G1                      | 30,36             |
| 7054210104BZ | 052XZ1-F   | 4G1                      | 37,52             |
| 7054211105BZ | 052XZ1-F   | 5G1                      | 47,20             |
| 7054210202BZ | 052XZ1-F   | 2x1,5                    | 30,18             |
| 7054211203BZ | 052XZ1-F   | 3G1,5                    | 39,64             |
| 7054211204BZ | 052XZ1-F   | 4G1,5                    | 50,49             |
| 7054211205BZ | 052XZ1-F   | 5G1,5                    | 61,62             |
| 7054210302BZ | 052XZ1-F   | 2x2,5                    | 43,30             |
| 7054211303BZ | 052XZ1-F   | 3G2,5                    | 58,96             |
| 7054211304BZ | 052XZ1-F   | 4G2,5                    | 75,74             |
| 7054211305BZ | 052XZ1-F   | 5G2,5                    | 93,68             |



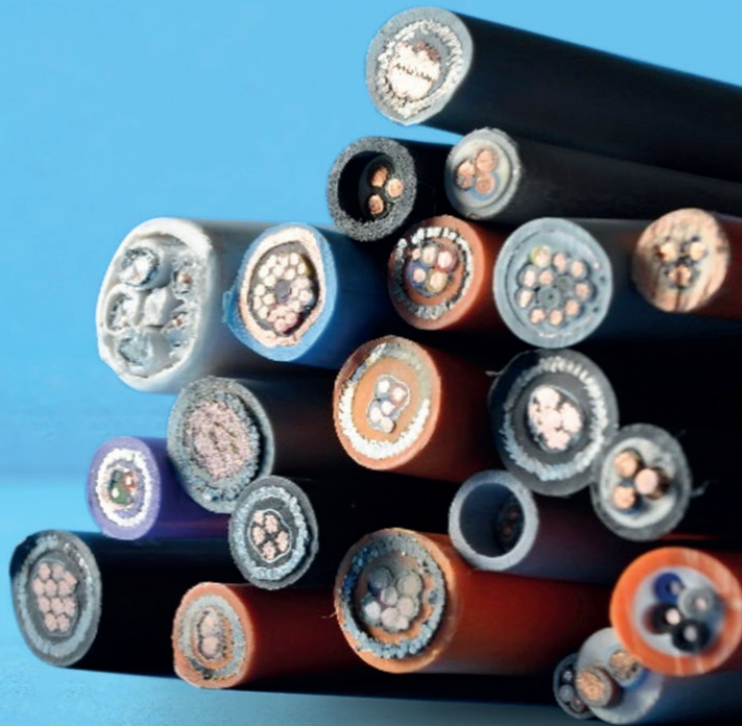


## AG ENERJİ VE TESİSAT KABLolari HFFR

| ÜRÜN KODU    | ÜRÜN CİNSİ | KESİT (mm <sup>2</sup> ) | BİRİM FİYAT (₺/m) |
|--------------|------------|--------------------------|-------------------|
| 7054200202GR | NHXMH-O    | 2x1,5                    | 30,75             |
| 7054201203GR | NHXMH-J    | 3G1,5                    | 40,32             |
| 7054201204GR | NHXMH-J    | 4G1,5                    | 51,05             |
| 7054201205GR | NHXMH-J    | 5G1,5                    | 62,45             |
| 7054201207GR | NHXMH-J    | 7G1,5                    | 82,79             |
| 7054200302GR | NHXMH-O    | 2x2,5                    | 45,33             |
| 7054201303GR | NHXMH-J    | 3G2,5                    | 61,87             |
| 7054201304GR | NHXMH-J    | 4G2,5                    | 79,22             |
| 7054201305GR | NHXMH-J    | 5G2,5                    | 97,74             |
| 7054201307GR | NHXMH-J    | 7G2,5                    | 133,85            |
| 7054201404GR | NHXMH-J    | 4G4                      | 122,05            |
| 7054201405GR | NHXMH-J    | 5G4                      | 151,40            |
| 7054201604GR | NHXMH-J    | 4G6                      | 180,54            |
| 7054201605GR | NHXMH-J    | 5G6                      | 222,87            |

## AG ENERJİ VE TESİSAT KABLolari HFFR - FE 180

| ÜRÜN KODU    | ÜRÜN CİNSİ     | KESİT (mm <sup>2</sup> ) | BİRİM FİYAT (₺/m) |
|--------------|----------------|--------------------------|-------------------|
| 5542102022PR | NHXMH-O FE 180 | 2x1,5                    | 34,52             |
| 5542012032PR | NHXMH-J FE 180 | 3G1,5                    | 50,96             |
| 5542012042PR | NHXMH-J FE 180 | 4G1,5                    | 64,19             |
| 5542012052PR | NHXMH-J FE 180 | 5G1,5                    | 79,14             |
| 5542013032PR | NHXMH-J FE 180 | 3G2,5                    | 72,33             |
| 5542013042PR | NHXMH-J FE 180 | 4G2,5                    | 92,45             |
| 5542013052PR | NHXMH-J FE 180 | 5G2,5                    | 115,71            |
| 5542014042PR | NHXMH-J FE 180 | 4G4                      | 140,34            |
| 5542014052PR | NHXMH-J FE 180 | 5G4                      | 175,66            |
| 5542016042PR | NHXMH-J FE 180 | 4G6                      | 196,13            |
| 5542016052PR | NHXMH-J FE 180 | 5G6                      | 243,64            |



### AWG / Amerikan Tel Ölçü Sistemi (Mono Bakır Teller İçin)

| AWG NO | KESİT (mm <sup>2</sup> ) | ÇAP (mm) | AĞIRLIK (kg/km) | Direnç (Ω/km) |
|--------|--------------------------|----------|-----------------|---------------|
| 18     | 0,823                    | 1,020    | 7,32            | 21,00         |
| 19     | 0,653                    | 0,912    | 5,80            | 26,40         |
| 20     | 0,519                    | 0,813    | 4,61            | 34,50         |
| 21     | 0,412                    | 0,724    | 3,70            | 41,90         |
| 22     | 0,324                    | 0,643    | 2,89            | 55,20         |
| 23     | 0,259                    | 0,574    | 2,34            | 66,60         |
| 24     | 0,205                    | 0,511    | 1,83            | 89,20         |
| 25     | 0,162                    | 0,455    | 1,44            | 106,00        |
| 26     | 0,128                    | 0,404    | 1,16            | 135,00        |
| 27     | 0,102                    | 0,361    | 0,92            | 169,00        |

### AWG / Amerikan Tel Ölçü Sistemi (Bükülü Bakır Teller İçin)

| AWG NO | TEL SAYISI X ÇAPI | KESİT (mm <sup>2</sup> ) | AĞIRLIK (kg/km) | Direnç (Ω/km) |
|--------|-------------------|--------------------------|-----------------|---------------|
| 18     | 41 X 0,160        | 0,824                    | 7,50            | 22,70         |
| 18     | 19 X 0,254        | 0,963                    | 8,60            | 22,70         |
| 18     | 7 X 0,404         | 0,897                    | 8,00            | 22,70         |
| 20     | 26 X 0,160        | 0,523                    | 4,75            | 35,80         |
| 20     | 19 X 0,203        | 0,614                    | 5,60            | 35,80         |
| 20     | 10 X 0,254        | 0,507                    | 4,60            | 35,80         |
| 20     | 7 X 0,320         | 0,562                    | 5,00            | 35,80         |
| 22     | 26 X 0,127        | 0,330                    | 3,00            | 57,40         |
| 22     | 19 X 0,160        | 0,382                    | 3,40            | 57,40         |
| 22     | 7 X 0,254         | 0,355                    | 3,16            | 57,40         |
| 24     | 41 X 0,078        | 0,196                    | 1,75            | 90,90         |
| 24     | 19 X 0,127        | 0,241                    | 2,15            | 90,90         |
| 24     | 10 X 0,160        | 0,201                    | 1,79            | 90,90         |
| 24     | 7 X 0,203         | 0,227                    | 2,02            | 90,90         |
| 26     | 19 X 0,102        | 0,155                    | 1,40            | 145,70        |
| 26     | 10 X 0,127        | 0,127                    | 1,15            | 145,70        |
| 26     | 7 X 0,160         | 0,141                    | 1,25            | 145,70        |
| 27     | 7 X 0,142         | 0,111                    | 0,99            | 182,40        |
| 28     | 19 X 0,078        | 0,091                    | 0,81            | 232,00        |
| 28     | 7 X 0,127         | 0,087                    | 0,78            | 232,00        |

### DIN VDE 0293'e Göre Damar Renk Tanımlamaları

| Damar Sayısı | YSLY-JZ   | YSLY-OZ  | YSLY-JB  | YSLY-OB  |
|--------------|---|--|--|--|
| 2            |   |  | -  | Kahve, Mavi  |
| 3            |   |  | Sarı-Yeşil, Mavi, Kahve  | Siyah, Mavi, Kahve   |
| 4            |   |  | Sarı-Yeşil, Siyah, Mavi, Kahve   | Siyah, Mavi, Kahve, Siyah                                    |
| 5            |   |  | Sarı-Yeşil, Siyah, Mavi, Kahve, Siyah                                    | Siyah, Mavi, Kahve, Siyah, Siyah                             |
| 6            | Bütün damarlar Siyah üzerine beyaz numaralı olacak, 3 damardan itibaren Sarı/Yeşil toprak damarı en dışta olacak şekilde kullanılacaktır, | Bütün Damarlar Siyah üzeri Beyaz numaralı olacak | Sarı-Yeşil, Beyaz, Siyah, Mavi, Kahve, Gri                               | Beyaz, Siyah, Mavi, Kahve, Gri, Kırmızı                      |
| 7            |   |  | Sarı-Yeşil, Beyaz, Siyah, Mavi, Kahve, Gri, Kırmızı                      | Beyaz, Siyah, Mavi, Kahve Gri, Kırmızı, Mor                  |
| 8            |   |  | Sarı-Yeşil, Beyaz, Siyah, Siyah, Mavi, Kahve, Gri, Kırmızı, Mor          | Beyaz, Siyah, Mavi, Kahve, Gri, Kırmızı, Mor, Pembe          |
| 9            |   |  | Sarı-Yeşil, Beyaz, Siyah, Mavi, Kahve, Gri, Kırmızı, Mor, Pembe          | Beyaz, Siyah, Mavi, Kahve, Gri, Kırmızı, Mor, Pembe, Turuncu |
| 10           |   |  | Sarı-Yeşil, Beyaz, Siyah, Mavi, Kahve, Gri, Kırmızı, Mor, Pembe, Turuncu | -  |
| >10          |   |  | -  | -  |

## UYGULANAN TESTLERDEN ÖRNEKLER



Alev Parçacıklarının Belirlenmesi Testi



Alev Geciktirme Testi Demet Kablo İçin



Darbe Altında İzolasyon Sürekliliği Testi



Duman Yoğunluğu Testi



Alev Geciktirme Testi Tek Kablo İçin



İzolasyon Sürekliliği Testi



Halojen Asit Gaz Testi

